

Getting Started

FIERY 500 COLOR
PRINTING SYSTEM

FINAL DRAFT
5/2/99

This file contains material copyrighted by EFI. Ricoh may not use, copy, or distribute this material except for internal purposes only. Under no circumstances can Ricoh copy or distribute this material to anyone outside of Ricoh without EFI's written consent.

Copyright © 1999 Electronics For Imaging, Inc. All rights reserved.

This publication is protected by copyright, and all rights are reserved. No part of it may be reproduced or transmitted in any form or by any means for any purpose without express prior written consent from Electronics For Imaging, Inc., except as expressly permitted herein. Information in this document is subject to change without notice and does not represent a commitment on the part of Electronics For Imaging, Inc.

The software described in this publication is furnished under license and may only be used or copied in accordance with the terms of such license.

Patents: 5,867,179; 5,835,788; 5,666,436; 5,553,200; 5,543,940; 5,537,516; 5,517,334; 5,506,946; 5,424,754; 5,343,311; 5,212,546; 4,941,038; 4,837,722; 4,500,919

Trademarks

ColorWise and Rip-While-Print are trademarks registered in the U.S. Patent and Trademark Office. Fiery Driven, the Fiery Driven logo, Starr Compression, NetWise, and VisualCal are trademarks of Electronics For Imaging, Inc.

Adobe, the Adobe logo, Adobe Illustrator, PostScript, Adobe Photoshop, Adobe Separator, and Adobe PageMaker are trademarks of Adobe Systems Incorporated, registered in certain jurisdictions. EPS (Encapsulated PostScript) is a trademark of Altsys Corporation. Apple, the Apple logo, AppleShare, AppleTalk, EtherTalk, LaserWriter, and Macintosh are registered trademarks, and MultiFinder is a trademark of Apple Computer, Inc. Microsoft, MS, MS-DOS, and Windows are registered trademarks of Microsoft in the US and other countries. QuarkXPress is a registered trademark of Quark, Inc. Times, Helvetica, and Palatino are trademarks of Linotype AG and/or its subsidiaries. ITC Avant Garde, ITC Bookman, ITC Zapf Chancery, and ITC Zapf Dingbats are registered trademarks of International Typeface Corporation. Ethernet is a registered trademark of Xerox Corporation. NetWare and Novell are registered trademarks and Internetwork Packet Exchange (IPX) is a trademark of Novell, Inc. UNIX is a registered trademark of UNIX System Laboratories, a wholly owned subsidiary of Novell, Inc. PANTONE is a registered trademark of Pantone, Inc.

All other terms and product names may be trademarks or registered trademarks of their respective owners, and are hereby acknowledged.

Legal Notices

APPLE COMPUTER, INC. ("APPLE") MAKES NO WARRANTIES, EXPRESS OR IMPLIED, INCLUDING WITHOUT LIMITATION THE IMPLIED WARRANTIES OF MERCHANTABILITY AND FITNESS FOR A PARTICULAR PURPOSE, REGARDING THE APPLE SOFTWARE. APPLE DOES NOT WARRANT, GUARANTEE, OR MAKE ANY REPRESENTATIONS REGARDING THE USE OR THE RESULTS OF THE USE OF THE APPLE SOFTWARE IN TERMS OF ITS CORRECTNESS, ACCURACY, RELIABILITY, CURRENTNESS, OR OTHERWISE. THE ENTIRE RISK AS TO THE RESULTS AND PERFORMANCE OF THE APPLE SOFTWARE IS ASSUMED BY YOU. THE EXCLUSION OF IMPLIED WARRANTIES IS NOT PERMITTED BY SOME STATES. THE ABOVE EXCLUSION MAY NOT APPLY TO YOU.

IN NO EVENT WILL APPLE, ITS DIRECTORS, OFFICERS, EMPLOYEES OR AGENTS BE LIABLE TO YOU FOR ANY CONSEQUENTIAL, INCIDENTAL OR INDIRECT DAMAGES (INCLUDING DAMAGES FOR LOSS OF BUSINESS PROFITS, BUSINESS INTERRUPTION, LOSS OF BUSINESS INFORMATION, AND THE LIKE) ARISING OUT OF THE USE OR INABILITY TO USE THE APPLE SOFTWARE EVEN IF APPLE HAS BEEN ADVISED OF THE POSSIBILITY OF SUCH DAMAGES. BECAUSE SOME STATES DO NOT ALLOW THE EXCLUSION OR LIMITATION OF LIABILITY FOR CONSEQUENTIAL OR INCIDENTAL DAMAGES, THE ABOVE LIMITATIONS MAY NOT APPLY TO YOU. Apple's liability to you for actual damages from any cause whatsoever, and regardless of the form of the action (whether in contract, tort [including negligence], product liability or otherwise), will be limited to \$50.

Restricted Rights Legends

For defense agencies: Restricted Rights Legend. Use, reproduction, or disclosure is subject to restrictions set forth in subparagraph (c)(1)(ii) of the Rights in Technical Data and Computer Software clause at 252.227.7013.

For civilian agencies: Restricted Rights Legend. Use, reproduction, or disclosure is subject to restrictions set forth in subparagraph (a) through (d) of the commercial Computer Software Restricted Rights clause at 52.227-19 and the limitations set forth in Electronics For Imaging, Inc.'s standard commercial agreement for this software. Unpublished rights reserved under the copyright laws of the United States.

Software License Agreement

Before using the Software, please carefully read the following terms and conditions. BY USING THIS SOFTWARE, YOU SIGNIFY THAT YOU HAVE ACCEPTED THE TERMS OF THIS AGREEMENT. If you cannot or do not accept these terms, you may return the entire package within ten (10) days to the Distributor or Dealer from which you obtained them for a full refund.

Electronics For Imaging, Inc. grants to you a non-exclusive, non-transferable license to use the software and accompanying documentation ("Software") included with the Fiery 500 you have purchased, including without limitation the PostScript® software provided by Adobe Systems Incorporated.

You may:

- a. use the Software solely for your own customary business purposes and solely with Fiery 500;
- c. use the trademarks used by Electronics For Imaging to identify the Coded Font Programs and Typefaces reproduced therefrom ("Trademarks"); and
- d. assign your rights under this Agreement to a transferee of all of your right, title and interest in and to Fiery 500 provided the transferee agrees to be bound by all of the terms and conditions of this Agreement.

You may not:

- a. make use of the Software, directly or indirectly, to print bitmap images with print resolutions of 600 dots per inch or greater, or to generate fonts or typefaces for use other than with Fiery 500;
- b. make or have made, or permit to be made, any copies of the Software, Coded Font Programs, accompanying documentation or portions thereof, except as necessary for use with the Fiery 500 unit purchased by you; provided, however, that under no circumstances may you make or have made, or permit to be made, any copies of that certain portion of the Software which has been included on the Fiery 500 hard disk drive. You may not copy the documentation;
- c. attempt to alter, disassemble, decrypt or reverse engineer the Software, Coded Font Programs or accompanying documentation.
- d. rent or lease the Software.

Proprietary Rights

You acknowledge that the Software, Coded Font Programs, Typefaces, Trademarks and accompanying documentation are proprietary to Electronics For Imaging and its suppliers and that title and other intellectual property rights therein remain with Electronics For Imaging and its suppliers. Except as stated above, this Agreement does not grant you any right to patents, copyrights, trade secrets, trademarks (whether registered or unregistered), or any other rights, franchises or licenses in respect of the Software, Coded Font Programs, Typefaces, Trademarks or accompanying documentation. You may not adapt or use any trademark or trade name which is likely to be similar to or confusing with that of Electronics For Imaging or any of its suppliers or take any other action which impairs or reduces the trademark rights of Electronics For Imaging or its suppliers. The trademarks may only be used to identify printed output produced by the Coded Font Programs. At the reasonable request of Electronics For Imaging, you must supply samples of any Typeface identified with a trademark.

Confidentiality

You agree to hold the Software and Coded Font Programs in confidence, disclosing the Software and Coded Font Programs only to authorized users having a need to use the Software and Coded Font Programs as permitted by this Agreement and to take all reasonable precautions to prevent disclosure to other parties.

Remedies

Unauthorized use, copying or disclosure of the Software, Coded Font Programs, Typefaces, Trademarks or accompanying documentation will result in automatic termination of this license and will make available to Electronics For Imaging other legal remedies.

Limited Warranty And Disclaimer

Electronics For Imaging warrants that, for a period of ninety (90) days from the date of delivery to you, the Software under normal use will perform without significant errors that make it unusable. Electronics For Imaging's entire liability and your exclusive remedy under this warranty (which is subject to you returning Fiery 500 to Electronics For Imaging or an authorized dealer) will be, at Electronics For Imaging's option, to use reasonable commercial efforts to attempt to correct or work around errors, to replace the Software with functionally equivalent software, or to refund the purchase price and terminate this Agreement. Some states do not allow limitations on duration of implied warranty, so the above limitation may not apply to you.

Except for the above express limited warranty, Electronics For Imaging makes and you receive no warranties or conditions on the Products, express, implied, or statutory, and Electronics For Imaging specifically disclaims any implied warranty or condition of merchantability or fitness for a particular purpose.

For warranty service, please contact your authorized service/support center.

EXCEPT FOR THE ABOVE EXPRESS LIMITED WARRANTY, ELECTRONICS FOR IMAGING MAKES AND YOU RECEIVE NO WARRANTIES OR CONDITIONS ON THE SOFTWARE OR CODED FONT PROGRAMS, EXPRESS, IMPLIED, STATUTORY, OR IN ANY OTHER PROVISION OF THIS AGREEMENT OR COMMUNICATION WITH YOU, AND ELECTRONICS FOR IMAGING SPECIFICALLY DISCLAIMS ANY IMPLIED WARRANTY OR CONDITION OF MERCHANTABILITY OR FITNESS FOR A PARTICULAR PURPOSE. Electronics For Imaging does not warrant that the operation of the software will be uninterrupted or error free or that the Software will meet your specific requirements.

Limitation Of Liability

IN NO EVENT WILL ELECTRONICS FOR IMAGING OR ITS SUPPLIERS BE LIABLE FOR ANY DAMAGES, INCLUDING LOSS OF DATA, LOST PROFITS, COST OF COVER OR OTHER SPECIAL, INCIDENTAL, CONSEQUENTIAL OR INDIRECT DAMAGES ARISING FROM THE USE OF THE SOFTWARE, CODED FONT PROGRAMS OR ACCOMPANYING DOCUMENTATION, HOWEVER CAUSED AND ON ANY THEORY OF LIABILITY. THIS LIMITATION WILL APPLY EVEN IF ELECTRONICS FOR IMAGING OR ANY AUTHORIZED DEALER HAS BEEN ADVISED OF THE POSSIBILITY OF SUCH DAMAGE. YOU ACKNOWLEDGE THAT THE PRICE OF THE UNIT REFLECTS THIS ALLOCATION OF RISK. BECAUSE SOME STATES/JURISDICTIONS DO NOT ALLOW THE EXCLUSION OR LIMITATION OF LIABILITY FOR CONSEQUENTIAL OR INCIDENTAL DAMAGES, THE ABOVE LIMITATION MAY NOT APPLY TO YOU.

Export Controls

You agree that you will not export or re-export the Software or Coded Font Programs in any form without the appropriate United States and foreign government licenses. Your failure to comply with this provision is a material breach of this Agreement.

Government Use

Use, duplication or disclosure of the Software by the United States Government is subject to restrictions as set forth in subdivision (c) (1) (ii) of the Rights in Technical Data and Computer Software clause at DFARS 252.227-7013 or in subparagraphs (c) (1) and (2) of the Commercial Computer Software—Restricted Right Clause at 48 CFR 52.227-19, as applicable.

Third Party Beneficiary

You are hereby notified that Adobe Systems Incorporated, a California corporation located at 345 Park Avenue, San Jose, CA 95110-2704 (“Adobe”) is a third-party beneficiary to this Agreement to the extent that this Agreement contains provisions which relate to your use of the Fonts, the Coded Font Programs, the Typefaces and the Trademarks licensed hereby. Such provisions are made expressly for the benefit of Adobe and are enforceable by Adobe in addition to Electronics For Imaging.

Contents

Introduction

| | |
|-------------------------|-----|
| About the documentation | xi |
| Specifications | xi |
| User software | xii |
| System requirements | xiv |
| Windows | xiv |
| Macintosh | xv |
| Parallel port | xv |
| IPX (Novell) | xv |
| Conventions | xvi |

Chapter 1: Connecting the Printer to a Network

| | |
|---|------|
| Network connections | 1-1 |
| Ethernet network connections | 1-2 |
| Token Ring network connections | 1-3 |
| Parallel cable connection | 1-4 |
| Setting up TCP/IP printing | 1-4 |
| Setting up the printing environment | 1-5 |
| Verifying the TCP/IP network connection | 1-5 |
| Setting up TCP/IP clients for printing | 1-6 |
| Setting up TCP/IP clients for running Fiery WebTools | 1-7 |
| Setting up IPX (Novell) printing | 1-8 |
| Tips for experts—IPX networks | 1-9 |
| Overview of IPX printing to the Fiery 500 | 1-9 |
| Configuring a NetWare server for printing | 1-10 |
| Using AppleTalk with Macintosh computers on an IPX (Novell) network | 1-14 |
| Setting up SMB printing with Windows 95/98 and Windows NT | 1-14 |

Chapter 2: Using the Operation Panel

| | |
|----------------------------------|-----|
| Using the operation panel | 2-1 |
| Activity lights | 2-2 |
| Display window | 2-2 |
| keys | 2-2 |

| | |
|-------------------------------|-----|
| Setting up the printer | 2-3 |
| Top-level menus | 2-4 |
| Main setup menus | 2-5 |

| | |
|--------------------------------------|------|
| Specifying system information | 2-6 |
| System Setup | 2-6 |
| Printer Setup | 2-8 |
| PostScript setup | 2-9 |
| PCL Setup | 2-10 |

| | |
|---------------------------------------|------|
| Specifying network information | 2-11 |
| I/O Port Setup | 2-11 |

| | |
|--|------|
| Specifying network protocol options | 2-14 |
| Network Protocol Setup | 2-14 |
| Network Services Setup | 2-19 |

| | |
|-----------------------|------|
| Language Setup | 2-26 |
|-----------------------|------|

| | |
|-----------------------------|------|
| Printing a Test page | 2-27 |
|-----------------------------|------|

| | |
|----------------------------------|------|
| Printing additional pages | 2-28 |
|----------------------------------|------|

Chapter 3: Installing Windows Software

| | |
|--|------|
| General steps for installing Windows software | 3-1 |
| Setting up PostScript or PCL printing with Windows 95/98 | 3-2 |
| Specifying installed devices | 3-3 |
| Completing the Windows 95/98 connection | 3-4 |
| Setting up PostScript or PCL printing with Windows NT | 3-8 |
| Specifying installed devices | 3-10 |
| Completing the Windows NT 4.0 connection | 3-11 |
| Setting up Fiery WebTools | 3-21 |
| Installing additional software for Windows users | 3-22 |
| PostScript and True Type fonts | 3-23 |
| Adobe Type Manager (Windows 95/98) | 3-23 |
| CMYK color reference file | 3-24 |
| PANTONE color reference file | 3-24 |

Chapter 4: Installing Macintosh Software

| | |
|--|-----|
| General steps for installing Macintosh software | 4-1 |
| Installing Macintosh printing software | 4-1 |
| Installing the Adobe PostScript printer driver | 4-1 |
| Setting up the Fiery 500 in the Chooser | 4-2 |
| Installing the Fiery 500 ICC printer profile | 4-4 |
| Setting up Fiery WebTools | 4-5 |
| Installing additional software for Macintosh users | 4-7 |
| Adobe Type Manager | 4-7 |
| CMYK color reference file | 4-8 |
| PANTONE color reference file | 4-8 |

Appendix A: Menu Help

Index

Introduction

This manual describes how to install the user software for the Fiery 500 and set up printing from Windows and Macintosh computers. For general information on using the color printer, your computer, your application software, or your network, see the manuals that accompany those products.

About the documentation

This manual is part of the set of Fiery 500 documentation, which includes the following manuals for users and system administrators:

- *Quick Installation Guide* describes the procedures for installing your printer.
- *Printer Reference* describes the necessary information on using your printer and its optional equipment.
- *Getting Started* describes how to install software to enable users to print to the Fiery 500. Specifically, it describes installation of PostScript printer drivers, printer description files, and other software provided on the User Software CD. It also explains how to connect each user to the network.
- The *User's Guide* provides an introduction to desktop color printing, how to print from various computers and workstations, what you need to know about using the printer in a networked environment, and how to use the software provided.
- *Release Notes* provide last-minute product information and workarounds for some of the problems you may encounter.

Specifications

The Fiery 500 has the following features:

- MIPS R4700, 133 MHz CPU
- 32MB RAM (optional upgrade to 160MB)
- Optional 1.6GB hard disk drive
- Supports AppleTalk, TCP/IP, and IPX protocols simultaneously
- Supports parallel port communication

- Supports thicknet (thick coaxial Ethernet cable or 10Base5) and unshielded twisted pair (Fast Ethernet 100BaseTX or Ethernet 10BaseT)

NOTE: Thinnet (thin coaxial Ethernet cable or 10Base2) is also supported, but an external transceiver must be prepared by the user.

- Supports Token Ring networking (available as an optional kit)
- Supports PCL5c/5e printing (for Windows computers)
- Supports Adobe PostScript 3
- Includes 136 fonts (117 Adobe Type 1 and 19 TrueType) for PostScript printing and 46 PCL fonts

In addition, two Adobe Multiple Master fonts are included and are used for font substitution in PDF files.

- Built-in ColorWise™ color management and NetWise™ networking features
- Fiery WebTools™

User software

The full set of Fiery 500 user software is provided on the User Software CD.

PCL Printer Driver

Enables you to print to the Fiery 500 from Windows computers; also supports all special Fiery 500 print features, and allows the Fiery 500 to appear in popular applications' Print and Page Setup dialog boxes.

The Fiery 500 includes 46 built-in PCL fonts. See Appendix A of the *User's Guide* for a complete list.

Adobe PostScript Printer Driver

Enables you to print to the Fiery 500 from Windows 95/98, Windows NT 4.0, and Macintosh computers; supports special Fiery 500 and PostScript 3 features.

| | |
|---|--|
| PostScript Printer Description files (PPDs) | Files for use with the PostScript printer driver; they allow the Fiery 500 to appear in popular applications' Print and Page Setup dialog boxes. The Fiery 500 PPDs provide information about the Fiery 500 and your particular printer model to the application and printer driver you are using. |
| PostScript Screen Fonts | Screen fonts for the 136 PostScript printer fonts installed on the Fiery 500 (117 Adobe Type 1 and 19 TrueType). See Appendix A of the <i>User's Guide</i> for a complete list. |
| Adobe Type Manager (ATM) | <p>ATM is provided for both Windows and Macintosh computers. It enables font sizes to be displayed at the proper resolution on your monitor.</p> <p>For Windows computers, ATM enables installation and use of the 136 PostScript fonts.</p> <p>For Macintosh computers, ATM provides a better screen representation of the 136 PostScript fonts.</p> <p>NOTE: For details on installation and use of ATM, see the <i>ATMUserGuide.pdf</i> file included with the ATM software.</p> |
| Color management files | ColorSync and ICM color management files that enable you to maintain consistent color from your original artwork to the colors displayed on your monitor to the printed output. |
| Color reference files | Reference pages that you can print to view the range of colors available on your Fiery 500. For the most predictable color results, refer to these pages when defining colors in applications. |

System requirements

To install the Fiery 500 user software on a Windows or Macintosh computer, the computer must be equipped with a built-in or external CD-ROM drive.

Windows

To print to the Fiery 500, you need:

- A Windows-based computer with an 80486, AMD, or Pentium processor
- Windows 95/98 or Windows NT 4.0
- At least 32MB of RAM

To use Fiery WebTools, you also need:

- *Either* Netscape Communicator v4.06 and later with Java enabled *or* Microsoft Internet Explorer v4.x and later with Java enabled
- A monitor that supports 16-bit color at a minimum resolution of 800 x 600
- A TCP/IP enabled network and the IP address or DNS name of the Fiery 500
- Web Services enabled on the Fiery 500

With Microsoft Windows 95/98, you also need:

- IPX/SPX or TCP/IP networking protocol installed
- Adobe PostScript Printer Driver for Windows version 4.2 or later (version 4.2.4 is included with the user software)

With Microsoft Windows NT 4.0 you also need:

- TCP/IP or AppleTalk networking protocol installed
- Adobe PostScript Printer Driver for Windows NT 4.0 version 5.0 or later (version 5.0.1 is included with the user software)

Macintosh

To print to the Fiery 500, you need:

- A Macintosh computer
- At least 32MB of RAM
- EtherTalk installed
- Apple system software version 7.5 or later
- Adobe PostScript Printer Driver version 8.5 or later (version 8.5.1 is included with the user software)

To use Fiery WebTools, you also need:

- Netscape Communicator v4.06 and later with Java enabled
- A TCP/IP enabled network and the IP address or DNS name of the Fiery 500
- Web Services enabled on the Fiery 500

Parallel port

To print to the Fiery 500 using the parallel port, you need:

- A Windows-based computer with an 80486, AMD, or Pentium processor
- At least 32MB of RAM
- A parallel cable (not included with the Fiery 500)

The cable should be IEEE-1284 subcompliant and have a male 36-pin mini C connector on one end, and a 25-pin male D-sub connector on the other.

IPX (Novell)

To use the Fiery 500 with an IPX (Novell) network, you need:

- A Novell server
- Novell NetWare software version 4.x or 3.x
- Support for Ethernet SNAP, Ethernet II, Ethernet 802.3, Ethernet 802.2, Token Ring SNAP, or Token Ring

Conventions



Indicates functionality for which a hard disk drive is required.

Chapter 1: Connecting the Printer to a Network

This chapter describes how to connect your printer to a network. You can connect the printer to your network with thicknet, twisted pair, or thinnet cable. You can also connect your printer directly to a PC compatible through the parallel port.

This chapter provides information about:

- Ethernet network connections
- Token Ring network connections (option)
- Parallel cable connection
- Setting up TCP/IP printing

TCP/IP stands for Transmission Control Protocol/Internet Protocol.

- Setting up IPX (Novell) printing

IPX stands for Internet Packet Exchange.

- Setting up SMB printing

SMB stands for Server Message Block.

- AppleTalk (Ethertalk)

After you have connected the printer to the network, follow the setup instructions in “Main setup menus” on page 2-5.

Network connections

This section describes the types of network connections supported by the printer. Optional network cards (required for network connections) are available from your dealer.

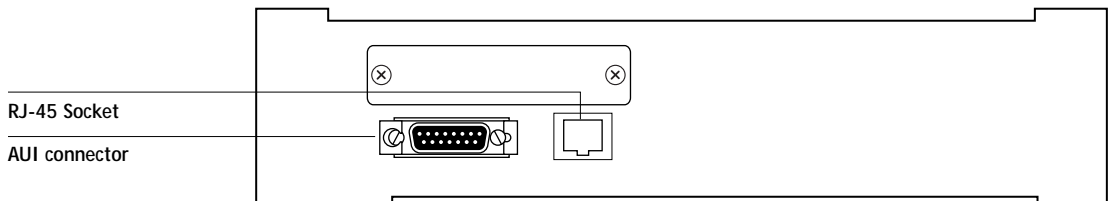
Ethernet network connections

- Thicknet (thick coaxial cable or 10 Base-5)

Cable connects directly to the AUI connector (Network Interface Connector for 10 Base-5) on the printer.

- Twisted pair (Category 5 unshielded twisted pair cable or 100 Base-TX)

Uses 8-pin RJ-45 connector that plugs into the RJ-45 socket (Network Interface Connector for 10 Base-T/100 Base-TX) on the printer.



NOTE: Turn off the printer before connecting it to any network device. Only one Ethernet connection should be made to the printer at a time.

NOTE: Thinnet (thin coaxial Ethernet cable or 10Base2) is also supported, but an external transceiver must be prepared by the user. The external transceiver (media access unit or MAU) is used to attach to the AUI connector on the printer.

TO CONNECT A THICKNET CABLE TO THE PRINTER:

1. With the printer turned off, connect the thicknet cable connector to the AUI connector on the back of the printer.
2. Turn on the printer.

TO CONNECT A TWISTED PAIR CABLE TO THE PRINTER:

1. With the printer turned off, connect the RJ-45 cable to the RJ-45 socket on the back of the printer.
2. Turn on the printer.

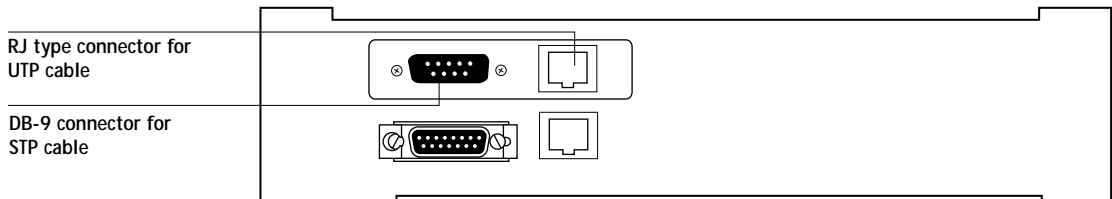
TO CONNECT A THINNET CABLE TO THE PRINTER:

1. With the printer turned off, connect the MAU transceiver to the AUI connector on the back of the printer. Secure the connection using the slide latch on the AUI connector.
2. Connect the thinnet cable to the BNC connector on the transceiver.
3. Turn on the printer.

Token Ring network connections

The printer supports the following types of Token Ring connections:

- Unshielded twisted pair cable (Category 5 unshielded twisted pair cable) that plugs into the UTP socket on the printer.
- Shielded twisted pair cable (Category 5 shielded twisted pair cable) that plugs into the DB 9-pin connector on the printer.



NOTE: When you connect your printer to the Token Ring network, you need an optional Token Ring Network Card. For details, contact your supplier.

TO CONNECT UTP (UNSHIELDED TWISTED PAIR) CABLE TO THE PRINTER:

- With the printer turned off, connect the cable from the Token Ring MAU (Media Attachment Unit) to the Token Ring card.

NOTE: A Media Attachment Unit (MAU) is a network hub for a Token Ring Network.

STP (SHIELDED TWISTED PAIR) CABLE TO THE PRINTER:

- With the printer turned off, connect the STP cable from the Token Ring MAU to the DB-9 STP connector on the Token Ring card.

Parallel cable connection

In addition to receiving print jobs over the network, the printer can accept print jobs directly from an IBM compatible computer through its high-speed, Centronics-compatible parallel port.

The parallel port connection can be used simultaneously with a network connection.

NOTE: Printing through a serial port is not supported on Macintosh computers.

TO CONNECT A PARALLEL CABLE TO THE PRINTER:

1. With the printer and the computer turned off, attach the Centronics Type C parallel cable (not included) to the parallel port on the back of the printer.
2. Connect the other end of the cable to the parallel port on the computer.
3. Turn on the printer and turn on the computer.

Setting up TCP/IP printing

TCP/IP provides network services for high-speed local and wide area networks and heterogeneous environments including PC compatibles, Macintosh computers, minicomputers, and mainframes running diverse operating systems. The printer supports the lpr protocol for printing over TCP/IP networks. Network users submit print jobs to a named printer. Workstations on a TCP/IP network can print directly to the printer, or can print to a Windows NT 4.0 server.

Before you install the printer on a TCP/IP network, you need to obtain a unique Internet address (IP address). Contact your network administrator for this information.

Setting up the printing environment

To set up printing on a TCP/IP network, the network administrator must follow these steps:

- Specify the appropriate settings in the I/O Port Setup and Network Setup menus. The administrator can enter a valid IP address for the printer, and the gateway address and subnet mask if they are used. Alternatively, you can set an Automatic IP Address. For information on I/O Port Setup and Network Setup see “Setting up the printer” on page 2-3.

If the site is using NIS (Network Information Services), a superuser must add the printer name and IP address to the system's database of network printers.

- Add the printer to the network's IP host table. This step must be performed on the master NIS (server) machine. After adding the printer entry, the updated database must be released to network users.
- For the printer name, specify the print server protocol, the print connection (queue), and the spool file.
- Activate the printer connection. Depending on your system, you may restart the printer daemon or tell the printer to accept print requests.

Verifying the TCP/IP network connection

Before a device on a TCP/IP network can send print jobs to the printer, the printer must have a valid IP address, and a gateway address and subnet mask, if applicable. The printer is given these addresses in Network Setup.

The printer is shipped from the factory with an invalid IP address assigned in Setup. The IP address is used on all TCP/IP networks and must always be assigned before the printer can be verified across the network.

The Setup also provide options to change the subnet mask and gateway address. Only some customer sites will require these values to be entered in Setup.

The following procedure enables you to verify that there is a proper connection between the printer and the network without using the printer driver to print a test page. Before you begin this procedure, verify that the printer is functioning by printing a Configuration Page from the printer's operation panel.

For step by step instructions, see "Printing additional pages" on page 2-28.

Once the printer's TCP/IP setup is complete, you can verify the availability of the printer using the ping command from the DOS prompt with Windows 95/98, or from the Command prompt with Windows NT.

TO VERIFY THE TCP/IP CONNECTION:

- To see if the printer responds to its address, use the ping command.

Use the format:

```
ping <IP address>
```

Use the printer IP address listed on the Configuration Page. After the printer has been given a hostname by your network administrator, you can also ping the name you gave it:

```
ping <hostname>
```

The server should respond with a message such as:

```
<IP address> is alive.
```

Some systems will respond with a continuous display of output from the IP address. To stop the output, type Control-C.

Setting up TCP/IP clients for printing

If the printer is being added to an existing network, each TCP/IP client is already running TCP/IP client software. This printer supports TCP/IP client software on PC compatibles and Macintosh computers. With Macintosh computers however, it is easier to use the built-in AppleTalk protocol to communicate directly with the printer.

If the client workstation is a PC running Windows, set up the printer as a Windows PostScript printer by installing the PostScript printer driver or as a Windows PCL printer by installing the PCL printer driver, as described in Chapter 3. For setting up your networking software, see the documentation for your networking environment.

Setting up TCP/IP clients for running Fiery WebTools

Fiery WebTools software comes pre-installed on the printer. Fiery WebTools include: WebSetup, WebSpooler, Status, WebDownloader, and WebLink.



NOTE: WebDownloader is available on Windows computers only. WebSpooler is available only for printers with an optional hard disk drive installed.

When TCP/IP is enabled for the printer in Network Setup, Fiery WebTools are immediately available to clients that:

- Are connected to a TCP/IP network with a consistent set of IP addresses, one for the printer and one for each computer connected to the printer
- Have an Internet connection and a Java enabled Web browser

The recommended browsers are:

- for Macintosh computers, Netscape Navigator 4.06 and later,
- for Windows computers, Netscape Communicator 4.06 and later or Microsoft Internet Explorer 4.x and later.

NOTE: Windows NT 4.0 users must download the Windows NT 4.0 Service Pack 3 or later in order to run the WebDownloader with Netscape Communicator 4.06.

Netscape and Microsoft continue to release frequent updates to their browsers. As support can not be guaranteed for all versions, use the versions specified above for best results.

To access Fiery WebTools, enter the IP address or DNS name of the printer as a URL in the Internet browser. For more information, see the *User's Guide*.

Setting up IPX (Novell) printing

The software built into the Fiery 500 supports the following network operating environments:

- NetWare 4.x—Novell Directory Services (NDS)
- NetWare 3.12—Bindery services
- Servers running NetWare 4.x in bindery emulation mode

The term “bindery server” is used to refer to a Novell file server running NetWare 3.12, or running NetWare 4.x in emulation mode. The term “NDS” is used to describe components of a NetWare operating system running NetWare 4.x in native mode.

NetWare clients print to the Fiery 500 through the Novell network server. Server setup and client network setup are outlined here. Client printing setup is described in Chapters 3 and 4.

NOTE: Setting up a NetWare environment correctly requires the presence and active cooperation of the Novell network administrator. You must have administrator privileges on the network to create new NDS or bindery objects.

The Fiery 500 can accept jobs concurrently from NetWare, Windows NT 4.0, and AppleShare servers, as well as jobs sent directly from Windows, Windows NT 4.0. NetWare clients on Macintosh or Windows NT 4.0 computers can print via the NetWare server.

The Fiery 500 can receive print jobs from NetWare clients over the Ethernet network topologies. During Fiery 500 setup, you select the frame type or types that will be used for communication between the Fiery 500 and network servers. Frame type refers to the format of a communications packet; frame types are specified in a startup file when the NetWare server (or any other workstation) loads its network drivers.

Tips for experts—IPX networks

The following information is useful for experienced network administrators.

A Fiery 500 with IPX connections has these characteristics:

- Both NetWare 3.12 and NetWare 4.x are supported directly. NetWare 4.x is also supported through bindery emulation.
- A minimum connection to the Fiery 500 consists of a NetWare file server, a NetWare print server, and a NetWare queue.
- A single directory tree (for NetWare 4.x) and up to eight bindery servers can be configured simultaneously.
- The Fiery 500 looks for print jobs on one NetWare print server per bindery server.
- Each print server can store jobs for any queue on the Fiery 500.

Overview of IPX printing to the Fiery 500

NetWare file servers support the creation of print queues, which are storage areas for print jobs. When a client on a remote computer decides to print, the job is directed to a print queue on the NetWare file server and spooled to the NetWare server disk, freeing up the client workstation.

The queues on the NetWare server must be named to match the Direct connection and the Print, and Hold queues on the Fiery 500. The NetWare queue names should be given an extension corresponding to the Fiery 500 queue, as follows:

`_direct`

`_hold`

`_print`



NOTE: The extension names must be in all lowercase and must be in English. The Print and Hold queues are enabled only if your printer has an optional hard disk drive installed.

There is no need to rerun Setup when adding or removing a NetWare queue; however you should initialize these settings by turning the printer off and on after a queue is created or removed.

When the Fiery 500 is configured to connect to a NetWare server, it polls the NetWare server for jobs in each of its queues. If jobs are found, they are transferred over the network to the matching connection: Print to Print, Hold to Hold, Direct to Direct. While a job is processed and printed, a record of the job is being created.



If your printer has an optional hard disk drive, you can access the Job Log containing these records at any time.

Configuring a NetWare server for printing

The following sections explain how to set up a NetWare file server so that networked users can print to the Fiery 500 from their workstations, and the Fiery 500 can obtain print jobs from the NetWare server.

For *each* NetWare file server that you configure, follow these general steps. More detail is provided in subsequent sections and in your NetWare documentation.

- Make sure the server is connected to a functioning IPX network.
- Log in as the Supervisor on a PC connected to the NetWare file server.
- For NetWare 4.x installations, set up an NDS connection (see page 1-12).
- For NetWare 4.x in emulation mode, set the bindery context (see page 1-12).
- For NetWare 3.12 and for NetWare 4.x in bindery emulation, set up a file server, a print server, and a print queue for the Fiery 500 (see page 1-13).

With bindery services, you can route all Fiery 500 print jobs through the same NetWare file server, or you can configure more than one file server to handle Fiery 500 jobs.

The functions you perform on the Novell server, on the Fiery 500, and on the client workstation, are summarized in the following tables. The first table applies to NDS connections, the second to bindery connections.

Complete the operations in the left column, then the center column, then the right column.

Configuring an NDS connection

Abbreviations:

FS = file server

PS = print server

PQ = print queue (on the NetWare server)

| On NDS FS: | On Fiery 500 operation panel: | On client workstation: |
|--|--|--|
| In NETADMIN: Create NDS PQs Create NDS printer and assign PQs Create PS and assign the printer Configure users of the PQs | I/O PORT SETUP ETHERNET Setup NETWORK PROTOCOL SETUP ENABLE NOVELL—(IPX/SPX) select frame type(s) NETWORK SERVICES SETUP ENABLE PSERVER Setup and ENABLE NDS Setup Select Root Browse to select PS Specify PQ search root (optional) Set Polling Interval | Install user software For printing: Connect client to PQ(s) that you set up on the NetWare FS (associated with the PS selected in NDS Setup) |

Configuring a bindery connection

| On Bindery FS: | On Fiery 500 operation panel | On client workstation: |
|---|---|--|
| In PCONSOLE: Select NetWare FS (up to 8) For each FS: Configure PS Configure PQ Configure users of the PQ | I/O PORT SETUP ETHERNET Setup NETWORK PROTOCOL SETUP ENABLE NOVELL—(IPX/SPX) select frame type(s) NETWORK SERVICES SETUP ENABLE PSERVER Setup and ENABLE BINDERY Setup Add FS (up to 8) Set Polling Interval | Install user software For printing: Connect client to PQ(s) that you set up on the NetWare FS (associated with the PS selected in Bindery Setup) |

Setting up an NDS connection

In NDS, all NetWare entities (objects) are organized in a hierarchical tree structure. Objects have a name, properties, and a context which defines the location of the object in the directory tree. For the Fiery 500 you are mainly concerned with defining a printer, a print server object and one or more print queue objects. Objects are created in NetWare administrator programs such as PCONSOLE, NETADMIN, or NetWare Administrator.

The top-level tree object is known as the [Root] object. The name of the [Root] object is also the name of the tree. Below the [Root] are other objects: either containers (which consist of other objects) or leaf objects (which do not contain other objects). Access to objects is controlled by rights that are defined as properties of each object. Rights are established by network administrators.

Setting the NetWare 4.x bindery context

You can connect only one directory tree to the Fiery 500. If you need to connect additional NetWare 4.x servers, you can do so by using bindery emulation, which causes the 4.x server to behave like and be accepted as a NetWare 3.12 server.

NOTE: The file server selected must not be in the same tree as that selected in NDS Setup.

Up to eight bindery servers, whether in native 3.12 mode or in 4.x emulation, can connect to the Fiery 500.

If your server is using NetWare 3.12, proceed to “Setting up a Fiery 500 print queue for bindery” on page 1-13.

In order to set up the NetWare 4.x server in bindery emulation mode for printing to the Fiery 500, the network administrator must do the following:

- Determine the Directory Services path to the container in which the print server and the print queue for the Fiery 500 will be created.

The container defines the “bindery context” for your network structure.

- Edit the network startup file to set the bindery context.
- Activate the new bindery context.

Setting up a Fiery 500 print queue for bindery

For NetWare 3.12 and for 4.x in emulation, the NetWare print server and print queue for Fiery 500 are created and configured from NetWare Print Console (PCONSOLE), a NetWare utility that is stored in NetWare's PUBLIC directory.

As with NDS, first you create several NetWare entities on a Novell server, then you select them in Network Setup on the Fiery 500 operation panel.

Setting up NetWare Windows clients for printing

Before setting up client workstations for printing, make sure you perform Network Setup on the Fiery 500 (see "Setting up the printer" on page 2-3), and that the settings reflect the entities you created in the NetWare administrator utilities (see page 1-10).

NOTE: For printing to the Fiery 500, connect all Windows clients to a Novell NetWare server and permit them to connect to the server or servers on which you defined a Fiery 500 queue.

After the Novell server and the Fiery 500 have been set up, client setup consists of:

- Installing the networking protocol, binding it to the network adapter card, and permitting the client to log in to the NetWare file server.

On Windows 95/98 workstations, both the IPX/SPX-compatible protocol and the Client for NetWare Networks should be loaded from the Network Control Panel. On Windows NT 4.0 workstations, Client Service for NetWare should be installed. Use the CSNW option in Control Panel to set printing options and specify a preferred NetWare server.

- Setting up the Fiery 500 as a PostScript or PCL printer by installing a PostScript or PCL printer driver and the Fiery 500 PPD or PDD (PostScript or PCL printer description file).
- Adding a network port and connecting the workstation to one or more NetWare queues that have been defined for the Fiery 500.
- Installing other optional client software, such as Color Reference files.

Using AppleTalk with Macintosh computers on an IPX (Novell) network

Macintosh users on an IPX network can print to the printer in two ways:

- Directly, using AppleTalk and bypassing the NetWare server
- Through a NetWare server running NetWare for Macintosh

Since the printer supports both AppleTalk and IPX protocols at the same time, it's not necessary to use the second option. However, a network administrator may choose to route all print jobs through a server.

NOTE: The printer can be attached to only one NetWare server at a time.

Printing directly to the printer

Due to the layered design of networks, data can be transmitted using more than one network protocol. When Macintosh computers are connected to an IPX network, they can continue to transmit data over Ethernet cable using AppleTalk protocols. If the printer is on the same network, Macintosh computers can see and print to the printer, provided that AppleTalk is enabled on the Macintosh and in Network Protocol Setup.

Setting up SMB printing with Windows 95/98 and Windows NT

If you do not have a Novell network, you can print to your printer over your network via SMB (Server Message Block) printing, also known as WINS (Windows Internet Naming Service) printing. Check with your network administrator to determine whether SMB printing is appropriate for your network environment.

To enable this type of communication you need to setup SMB printing on the printer, and depending on your network configuration, you may also need to specify additional settings in your computer's Network Control Panel.

For example, if your computer and the Fiery 500 are on different subnets, to establish communication between the devices you need to enable WINS Resolution, or if a DHCP server is used at your site, DHCP (Dynamic Host

Configuration Protocol) WINS Resolution. These options can be found in the TCP/IP Properties, WINS Configuration tab of the Network Control Panel. See the documentation that came with your operating system for details.

The following procedure describes how to set up the printer for printing using SMB. Specify settings in the SMB Setup menus on the printer's operation panel. Instructions on how to specify a network port to print to using the Details tab of the Printer Properties dialog follow.

NOTE: You need to enable the TCP/IP network connection before you setup the printer for SMB printing.

TO SET UP SMB PRINTING ON THE PRINTER:

1. From the Ready screen, use the Menu key on the operation panel to access the Setup Menus.
2. Press the Up Arrow key repeatedly until the NETWORK SERVICE SETUP screen appears. Press Enter until you see the ENABLE SMB screen.
3. Select Yes and press Enter to enable SMB and display the USE NAME SERVER screen.
4. Select YES to set up printing to an SMB name server of your choice; select NO to use the printer as the default SMB name server. Press Enter.

If you select YES you will be prompted to enter the IP address of the SMB name server. If your network has a WINS server, enter this server's IP address. When you are finished, press Enter to advance to the SERVER NAME screen.

If you select NO you will advance to the SERVER NAME screen.

By default the SMB server name is the name given to the printer in the System Setup screens.

5. Press Enter to accept this name, or use the arrow keys to enter another name for your SMB server and then press Enter.
6. Enter a comment in the SERVER COMMENT field.

This comment will appear to the right of the printer's name when computers and printers on the network are displayed in list view.



7. Press Enter to skip entering a comment, or enter a comment and then press Enter.
8. Enter the domain name of the SMB server you selected in step 3.

The printer is now prepared to accept print jobs over a network using SMB protocols. See Chapter 3 for instructions on how to print to a network port using the Details tab of the Printer Properties dialog box.

Chapter 2: Using the Operation Panel

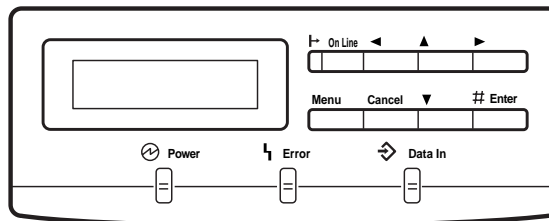
The operation panel on the top of the printer enables you to set options and view the status of the printer and print jobs. For a graphic overview of options available from the operation panel of the Fiery 500, see Appendix A, “Menu Help.”

This chapter provides information about:

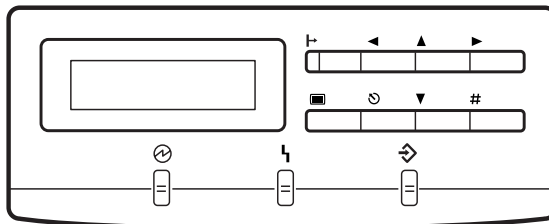
- Using the operation panel
- Setting up the printer for parallel printing
- Setting up the printer for network printing
- Printing a Test page
- Printing additional pages
- What to do if you have difficulty printing

Using the operation panel

This section describes the functions of the operation panel, illustrated below:



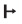



North American version



European version

Activity lights




The activity lights indicate the status of the printer.

| This light: | Indicates: |
|---|--|
|  On Line | On Line indicator—On when the printer is online (ready to accept and process new jobs), and off when the printer is offline or the power is off (European version has icon only) NOTE: When the printer is offline, you cannot print. |
|  Data In | Data In indicator—Blinking when receiving, processing or printing data; (European version has icon only) |
|  Power | Power indicator—On when the printer is on and off when the printer is off or in Energy Save mode (European version has icon only) |
|  Error | Error indicator—On when the printer requires a service call or operator intervention (European version has icon only) |

Display window

The LCD window on the operation panel displays status and error messages. The window also displays the menus to specify the printer settings, PCL and PostScript settings for the printer, settings for the network protocols and other useful settings. See “Setting up the printer” on page 2-3.

keys

| This key: | Indicates: |
|---|--|
|  | Down arrow—In Setup menus, advances from one menu to the previous. In a fixed-length list, takes you to the next item in the list. When entering numbers or text, decrements to the next number or character. Hold down the key to decrement rapidly. |
|  | Up arrow—In Setup menus, advances from one menu to the next. In a fixed-length list, takes you to the previous item in the list. When entering numbers or text, increment to the previous number or character. Hold down the key to increment rapidly. |
|  | Right arrow—When entering numbers or text, advances the cursor. |

| | |
|---|---|
| ◀ | Left arrow—When entering numbers or text, backspaces and deletes. |
| ☐ | Menu key—Enters the Setup menus. From a setup menu option, returns to the previous setup menu. |
| # | Enter key—Accepts an option and advances to the next choice. |
| ↵ | On Line key—When the printer is in Ready mode, takes the printer offline. |
| ⊘ | Cancel key—In Setup menus, exits menus entirely, returning to Ready. While printing, Cancel stops printing or processing the current job. |

Setting up the printer

This section describes how to set up the printer using the operation panel. After you set up the printer the first time, you may later need to change setup information. For example, your network may change, or you may decide not to print a start page when you turn on the printer. To change the setup at any time, follow the procedures outlined in this section.

To set up the printer, turn on the printer and press the Menu key when the message READY or ENERGY SAVE MODE appears in the display window.

- To advance through the list of Setup menus, press the Menu key.


NOTE: Before you change the setup, it's a good idea to print the current Configuration page, in case you need to restore the original settings later. For information on printing a Configuration page and other pages, see "Printing a Test page" on page 2-27.

- To view submenus, press the Up arrow or Down arrow key.
- To accept a displayed option, press the Enter key.

NOTE: Users can set an password for all menu items *except* CHECK AND PRINT, PRINTER SETUP items, MAINTENANCE, and SERVICE. When you try to access these items, an administrator password is requested. Enter the password to continue.

Top-level menus

When the printer is not processing or printing a job, the operation panel displays READY or ENERGY SAVE MODE. To view the top-level menu items, press the Menu key. To cycle through these items, press the Up arrow key.

| At this screen: | You can: |
|--|---|
| CHECK AND PRINT | <p>After you check one copy, print remaining copies or processed jobs stored on the printer disk. For details, see the <i>User's Guide</i>.</p> <p> NOTE: This option is available only if your printer has an optional hard disk drive installed.</p> <p>NOTE: To access this item, an administrator password is requested. Enter the password to continue.</p> |
| PRINT PAGES FROM LIST | Display the printer's resident pages. For details, see page 2-27. |
| RESETS | Return the printer to its factory settings. |
| SYSTEM SETUP to PCL SETUP | <p>Specify information about the printer and to set a password to limit access to printer setup menus (see page 2-6 to page 2-26).</p> <p>NOTE: To access this item, an administrator password is requested. Enter the password to continue.</p> |
| VISUALCAL | Calibrate the printer's color production. For information on VisualCal color calibration see the <i>User's Guide</i> . |
| COLOR ADJUSTMENT | Adjust the density and brightness of toner. For information on Color Adjustment see the <i>User's Guide</i> . |
| I/O PORT SETUP to NETWORK SERVICES SETUP | Specify information about network options. For details, see page 2-11. |
| PANEL LANGUAGE | Choose the language for the operation panel and the pages you can print from the operation panel (see page 2-26). |

| At this screen: | You can: |
|-----------------|---|
| MAINTENANCE | Perform maintenance tasks such as replacing toner and adjusting tray position. NOTE: To access this item, an administrator password is requested. Enter the password to continue. |
| SERVICE | Perform service on the printer. This menu requires a special password. NOTE: To access this item, a password is requested. Enter the password to continue. |

NOTE: After you make changes to the setup options or resets, it will take several minutes for the printer to reboot, initialize, and calibrate. Wait for the READY message, before you resume printing or other job functions.

Main setup menus

The following table lists the main setup menus and their functions (for a complete list of top-level menus, see page 2-4).

Many of the options in the I/O PORT SETUP, NETWORK PROTOCOL SETUP, and NETWORK SERVICES SETUP menus appear only for networked printers.

| Choose: | To specify: | See: |
|------------------------|--|-----------|
| SYSTEM SETUP | System settings for the printer; set or change the administrator password used to limit access to the Setup menus. | page 2-6 |
| PRINTER SETUP | Printer settings | page 2-8 |
| PS SETUP | PostScript settings for the printer. | page 2-9 |
| PCL SETUP | PCL settings for the printer | page 2-10 |
| I/O PORT SETUP | Settings for the network and/or parallel connections to the printer | page 2-11 |
| NETWORK PROTOCOL SETUP | Settings for the network protocols | page 2-14 |
| NETWORK SERVICES SETUP | Settings for the printing services | page 2-19 |

| | | |
|----------------|--|-----------|
| PANEL LANGUAGE | The language displayed on the operation panel and used on pages printed from the operation panel | page 2-26 |
|----------------|--|-----------|

Specifying system information

The System and Printer Setup menus enable you to specify information about the printer.

NOTE: In all the setup descriptions that follow, default values, where applicable, are shown in square brackets.

System Setup

This section describes first-time setup if no password has been set.

SYSTEM SETUP

To advance to the PRINTER NAME screen, press Enter.

PRINTER NAME

printer

Use this option to give the printer a name. The printer name can be up to 16 characters.

PRINT START PAGE

YES/NO [NO]

Use this option to specify whether the printer should print a start page when it restarts, to verify that it is working properly. The Start page contains such information as: printer name, enabled network protocols, amount of memory installed, and options installed on the printer.



PUBLISH PRINTD Q

YES/NO [YES]

This option is available only if your printer has an optional hard disk drive installed. Use this option to enable recently printed jobs to be stored on the printer. The Printed queue makes it convenient to reprint those jobs.



JOBS TO SAVE
1-99 [10]

This option appears only if PUBLISH PRINTD Q is set to YES. Use this option to specify the number of jobs to be stored in the Printed Queue.

ENERGY SAVE MODE
LEVEL 1/LEVEL 2 [LEVEL 1]

Use this option to select the level of energy saved when the printer is in Energy Save Mode. Level 1 saves the most power, but takes more time to warm up. Level 2 saves less power, but also takes less time to warm up.

POWER SAVER (M)
0 MIN/30 MIN/60MIN/120 MIN/180 MIN [60 MIN]

Use this option to select the length of time during which there is no printer activity before the printer switches to Energy Save mode. Full power mode is automatically restored when the printer receives a network print job or any key on the operation panel is pressed.

CHANGE PASSWORD
YES/NO [NO]

Use this option to set or change the administrator password for the printer. In most cases, only the system administrator should have access to this password.

When you select YES in the CHANGE PASSWORD screen, you are prompted to enter the new password.

NEW PASSWORD

To enter a new password use the up arrow key to scroll through characters and the right arrow key to move from left to right, from character to character. To delete a character, use the left arrow key. The password can be any combination of letters and numbers up to 16 characters. When you are finished, press the Enter key.

VERIFY PASSWORD

To verify a new or existing password, you must enter the password again. If you make a mistake, you will be prompted to enter the password again.

Printer Setup

The Printer Setup options set the printer's page description language (PDL), paper size, and specify the paper used in various trays.

PRINTER SETUP

To advance to the PAGE DESC LANG screen, press Enter.

PAGE DESC LANG
PS/PCL/AUTO [AUTO]

Use this option to select a default page description language for your printer. If you select AUTO, the printer will automatically detect and interpret the page description language used by the file.

DEF. PAPER SIZE
8.5 X 11/A4 [8.5 X 11/A4]

Use this option to specify the default paper size to print on. Information pages from the PRINT PAGES FROM LIST menu (Configuration page, PS or PCL Font list, and Test page) and pages from the VISUALCAL menu are printed on the default paper size set here.

NOTE: The default settings for the above and following paper size options are different for the North American and European versions of the printer. The North American default is noted first and the European second. For more information on the paper sizes supported by your printer, see the *Printer Reference*.

BYPASS TRAY SIZE
[8.5 X 11/A4]

Use this option is specify the default paper size for the Bypass Tray.

SET [*] SIZE
YES/NO [NO]

Use this option to adjust the paper size for each tray that is installed.

TRAY1 [*] SIZE
[8.5 X 13/B4]

This option appears only if you selected YES to SET [*] SIZE. Use this option to select the paper size for Tray 1.

TRAY2 [*] SIZE
[8.5 X 13/8.5 X 13]

This option appears only if you selected YES to SET [*] SIZE. Use this option to select the paper size for Tray 2.

TRAY3 [*] SIZE
[8.5 X 13/8.5 X 13]

This option appears only if you selected YES to SET [*] SIZE. Use this option to select the paper size for Tray 3.

OHP SLIP SHEET
YES/NO [YES]

The OHP Slip Sheet is a sheet of paper placed between printed OHP transparencies. This printer uses paper in Tray 1 for OHP Slip Sheets even if the direction and size of the paper loaded in Tray 1 is different from the direction and size of the OHP transparency. Check the direction and size of paper loaded in Tray 1 before using this option. When there is no paper loaded in Tray 1, OHP Slip Sheet will not work even if this option is set to YES. In this case, be sure to remove each OHP transparency immediately after it is printed.

AUTO PAPER EJECT
YES/NO [NO]

If YES is selected and the correct paper size is not loaded in any tray, the print data will be printed automatically regardless of the paper size.

PostScript setup

The PostScript setup menus enable you to set PostScript printing options.

PS SETUP

To proceed, press Enter.

PRINT TO PS ERR
YES/NO [NO]

Use this option to specify whether to print the portion of a print job processed before a PostScript error is encountered. Select YES to print the portion of the job that was processed and a description of the PostScript error, which may help you troubleshoot the error; select NO to cancel printing when a PostScript error is encountered.

COVER PAGE
YES/NO [NO]

Use this option to specify whether a Cover (job summary) page will be printed at the end of each print job. Select YES to print a page with the name of the user who sent the job, the document name, the number of pages printed, and the status of the job.

If a PostScript error occurred and PRINT TO PS ERR is set to YES, the error message will be printed on the Cover page, along with the job status.

PCL Setup

The PCL Setup menus enable you to set PCL printing options PCL jobs sent to the printer without formatting instructions.

NOTE: PCL is available only when printing from IBM PC or compatible computers.

PCL SETUP

To proceed, press Enter.

DEF ORIENTATION
LANDSCAPE/PORTRAIT [PORTRAIT]

Use this option to specify the default orientation of the print job on the paper. Select PORTRAIT to print text across the short dimension on a Portrait orientation page; LANDSCAPE to print text across the long dimension on a Landscape page.

FORM LENGTH
5-128 [60 LINES]

Use this option to specify the number of lines of text per page to print.

NOTE: Form length varies according to the orientation of the paper.

The next setting and the remaining settings in this section apply to ASCII text files on a per job basis.

FONT NUMBER

0-45 [0]

Use this option to specify which PCL font to print. For a complete list of available PCL fonts and their corresponding font numbers see Appendix A of the *User's Guide*.

PITCH (CHAR/IN)

0.44-99.99 [10.00]

This option appears if you chose a fixed-space font in the previous option. Use this option to specify the pitch, or number of fixed-space, PCL characters per horizontal inch to print.

FONT SIZE (PT)

4.0-999.75 [12.00]

This option appears if you chose a variable-space font in the FONT NUMBER option. Use this option to specify the point size of the font to print.

SYMBOL SET=

PC-8, WIN 3.0, ISO-69, ISO-60, ISO-21, ISO-17, ISO-15, ISO-11, ISO-6, ISO-4, LEGAL, PS TEXT, DESKTOP, WIN-L5, WIN-L2, WIN-L1, PC-8TK, PC 852, PC 850, PC-8DN, ISO L5, ISO L2, ISO L1, ROMAN-8 [PC-8]

Use this option to specify the PCL Symbol set to print.

A symbol set is a specific set of symbols provided by a font. In general, each set is designed with a unique application in mind. The PC-8 symbol set, for example, was designed to support US IBM PC applications.

NOTE: VisualCal color calibration and Color Adjustment screens, which appear next in the sequence of screens, are described in the *User's Guide*.

Specifying network information

I/O Port Setup

The I/O Port Setup menus allow you to specify and set up the printer port type, including: Ethernet, Token Ring (if an optional Token Ring card is installed), or parallel port.

I/O PORT
SETUP

To advance to the next screen, press Enter.

Ethernet

ETHERNET
OFF/ON [ON]

Select ON to enable Ethernet network communication.

ETHERNET SPEED
AUTO DETECT/10 TWISTED PAIR/10 AUI/10 AUTO/100 [AUTO DETECT]

Select AUTO DETECT to automatically detect the speed at which data can be transferred over the Ethernet network, or optionally specify the speed and cabling of your Ethernet network.

Token Ring (option)

TOKEN RING
ON/OFF [ON]

Select ON to enable Token Ring network communication. Token Ring options appear only if an optional Token Ring card is installed.

TOKEN RING SPEED
AUTO DETECT/4 M BPS/16 M BPS [AUTO DETECT]

Select AUTO DETECT to automatically detect the speed at which data can be transferred over the Token Ring network, or optionally specify the speed of your Token Ring network.

MAX. FRAME SIZE
0.5K/1K/2K/4K [4K]

Use the arrow keys to select a maximum frame size for Token Ring communication.

NOTE: The Token Ring frame size must be no greater than the frame size used by any router or Novell file server on the network.

SOURCE ROUTING
ON/OFF [OFF]

Select ON to allow the packet to travel to its destination through routers on the network. The packet's source dictates the route that the packet will take.

REQ ALL ROUTE
ON/OFF [OFF]

If source routing is enabled, select ON to allow all routers on the network to broadcast the presence of the printer, enabling packets from clients on the network to travel to the printer by any route.

RESP ALL ROUTE
ON/OFF [OFF]

If source routing is enabled and REQ ALL ROUTE is set to OFF, select ON to allow all routers on the network to broadcast the presence of clients to the printer; limits packets from clients on the network to travel to the printer to a specific route.

Parallel Port Setup

In addition to receiving print jobs over Ethernet or Token Ring, the printer can receive print jobs from a computer through the high speed parallel port.

PARALLEL PORT
OFF/ON [ON]

Use this option to enable printing through the parallel port.

I/O TIMEOUT
5-300 SECONDS [15]

If PARALLEL PORT is set to ON, use this option to specify how long the printer waits without receiving data from the parallel port before deciding that the current job is complete. During the timeout, the printer cannot receive new jobs through the parallel port, but it continues to receive network print jobs.

IGNORE EOF
YES/NO [YES]

If PARALLEL PORT is set to ON, use this option to specify that the printer should ignore end-of-file (EOF) messages in a file. To print PostScript files in binary format (not ASCII), this option must be set to YES. When this option is set to YES, the printer uses the value you entered for the parallel port timeout to determine when it has reached the end of the file.

Specifying network protocol options

Network Protocol Setup

Network Protocol Setup options are used to specify and setup TCP/IP Ethernet, TCP/IP Token Ring, AppleTalk, and IPX (Novell) network protocols.

NETWORK PROTOCOL
SETUP

Press Enter to proceed.

TCP/IP Setup

TCP/IP-ETHERNET
YES/ NO [NO]

Select YES if you have a TCP/IP network connected to the printer over Ethernet cabling.

For more information on setting up TCP/IP printing using Ethernet, see Chapter 1.

ENABLE AUTO IP
YES/NO [NO]

Use this option to enable the automatic assignment of an IP address to the Fiery 500.

ENABLE DHCP
YES/NO [YES]

This option appears only if you selected YES to ENABLE AUTO IP. Use this option to use the DHCP protocol to assign the automatic IP address.

ENABLE BOOTP
YES/NO [NO]

This option appears only if you selected NO to ENABLE DHCP. Use this option to enable the BOOTP protocol to assign the automatic IP address.

ENABLE RARP
YES/NO [NO]

This option appears only if you selected NO to ENABLE DHCP and ENABLE BOOTP. Use this option to enable the RARP protocol to assign the automatic IP address. If you select YES to this option, the ETH. SUBNET MASK will appear next.

ETH. IP ADDRESS
[127.000.000.001]

This option appears only if you selected NO to ENABLE AUTO IP. Use the arrow keys to assign the printer an Ethernet IP address. Press Enter to accept your selection.

ETH. SUBNET MASK
[255.255.255.000]

This option lets you modify the subnet mask for printing with TCP/IP over Ethernet. The subnet mask is set to 255.255.255.000 by default. If you set the IP address and you need to set the subnet mask, enter one of the following values:

- 255.000.000.000 if the IP address starts with a number less than 128
- 255.255.000.000 if the IP address starts with a number from 128 through 191
- 255.255.255.000 if the IP address starts with a number greater than 191

Be sure to confirm the subnet mask setting with your network administrator before proceeding. In some cases the required setting may be different from those listed.

The following options appear if an optional Token Ring card is installed on the printer.

TCP/IP-TOKENRING
YES/NO [NO]

Select YES if you have TCP/IP network connected to the printer over Token Ring cabling.

ENABLE AUTO IP
YES/NO [NO]

Use this option to enable the automatic assignment of an IP address to the Fiery 500.

ENABLE DHCP
YES/NO [YES]

This option appears only if you selected YES to ENABLE AUTO IP. Use this option to use the DHCP protocol to assign the automatic IP address.

ENABLE BOOTP
YES/NO [NO]

This option appears only if you selected NO to ENABLE DHCP. Use this option to enable the BOOTP protocol to assign the automatic IP address.

ENABLE RARP
YES/NO [NO]

This option appears only if you selected NO to ENABLE DHCP and ENABLE BOOTP. Use this option to enable the RARP protocol to assign the automatic IP address. If you select YES to this option, the TR. SUBNET MASK will appear next.

T.R. IP ADDRESS
[127.000.000.001]

This option appears only if you selected NO to ENABLE AUTO IP. Use the arrow keys to assign the printer a Token Ring IP address. Press Enter to accept your selection.

T.R. SUBNET MASK
[255.255.255.000]

This option lets you modify the subnet mask for printing with TCP/IP over Token Ring. The subnet mask is set to 255.255.255.0 by default. If you set the IP address and you need to set the subnet mask, enter one of the following values:

- 255.000.000.000 if the IP address starts with a number less than 128
- 255.255.000.000 if the IP address starts with a number from 128 through 191
- 255.255.255.000 if the IP address starts with a number greater than 191

Be sure to confirm the subnet mask setting with your network administrator before proceeding. In some cases the required setting may be different from those listed.

AUTO GATEWAY
YES/NO [NO]

This option appears only if you selected YES to ENABLE AUTO IP for Ethernet and/or Token Ring. Use this option to automatically assign the gateway address. If you select NO, you will be asked to enter the gateway address.

NOTE: The following option appears if TCP/IP Ethernet or TCP/IP Token Ring is enabled. It will not appear if you selected YES for AUTO GATEWAY.

GATEWAY ADDRESS
[127.000.000.001]

Use this option to specify the gateway address for printing with TCP/IP. By default, no gateway address is set. If your TCP/IP network has a gateway and you plan to print using TCP/IP, you must enter the gateway address.

NOTE: When the printer's TCP/IP address, gateway, or subnet values are changed the printer automatically restarts when Setup is exited, in order to initialize the new values.

AppleTalk Setup

ENABLE APPLETALK
YES/NO [NO]

Select YES if you have an AppleTalk network connected to the printer. You can enable AppleTalk, TCP/IP, and IPX (Novell) communication simultaneously.

NOTE: The following option is displayed only if ENABLE APPLETALK is set to YES.

APPLETALK ZONE

Use the arrow keys to select the AppleTalk zone in which you want the printer to appear. If you do not select a zone, the printer is assigned to the default AppleTalk zone. If your network does not have zones, this option does not appear.

Novell Setup

ENABLE NOVELL
YES/NO [NO]

Select YES if you have an IPX (Novell) network connected to the printer. You can enable AppleTalk, TCP/IP, and IPX (Novell) communication simultaneously.

The following seven options appear only if you selected YES for ENABLE NOVELL. If you select NO, pressing Enter returns you to the NETWORK PROTOCOL setup screen.

NOTE: On the LCD and in the descriptive text, the terms IPX, IPX (Novell), and NetWare are used somewhat interchangeably. In fact, IPX refers to the network protocol, NetWare to the network operating system software that uses IPX protocols; Novell has created and trademarked this network operating system.

For more information on setting up Novell printing see “Setting up IPX (Novell) printing” on page 1-8.

Novell Frame Types

The next screens enable you to select the Ethernet frame type used for communication between your NetWare file server (or NetWare file servers if you connect to more than one) and the printer.

AUTO FRAME TYPE
YES/NO [YES]

Select YES to enable the automatic assignment of a frame type to the printer.

SELECT NOVELL
FRAME TYPES

If you selected NO to AUTO FRAME TYPE, this screen appears. Press the Enter key to select a Novell frame type.

NOTE: Ethernet frame type screens appear only if the Ethernet port is enabled.

ETHERNET 802.3
YES/NO [NO]

Select YES to enable Ethernet 802.3

ETHERNET 802.2
YES/NO [NO]

Select YES to enable Ethernet 802.2.

ETHERNET II
YES/NO [NO]

Select Yes to enable Ethernet II.

ETHERNET SNAP
YES/NO [NO]

Select YES to enable Ethernet SNAP.

NOTE: Token Ring frame type screens appear only if the Token Ring port is enabled.

TOKEN RING 802.2
YES/NO [NO]

Select Yes to enable Token Ring 802.2.

TOKEN RING SNAP
YES/NO [NO]

Select Yes to enable Token Ring SNAP.

Network Services Setup

The Network Services Setup menus allow you to establish network services for your printer. This menu appears only if you selected YES for one or both of ENABLE NOVELL and TCP/IP-ETHERNET.

NETWORK SERVICES SETUP

To advance to the ENABLE PSERVER screen, press Enter.

ENABLE PSERVER
YES/NO [NO]

Select YES if you have a Novell network connected to the printer and if you have already configured a NetWare printer, a print server, and one or more print queue objects for print jobs. Pserver allows you to enter the names of the Novell objects that are concerned with printing to the Fiery 500.

Pserver is a program on the printer that services all the Novell print queues that are assigned to this printer. If you select YES to enable Pserver, you can proceed to configure NetWare Directory Services (NDS) and/or Bindery services.

NDS Setup

ENABLE NDS
YES/NO [YES]

NetWare Directory Services (NDS) is used with Netware 4.x. Select YES to enable NDS.

NOTE: The following screen appears only if earlier NDS settings exist.

CHANGE SETTINGS?
YES/NO [NO]

Select YES to specify or change NDS settings.

NDS TREE

Use the up and down arrows to select a tree from the NDS tree list and press Enter. If you select a tree for which earlier NDS settings exist, the following alert screen appears:

NEW TREE DELETES
BINDERY SETUP

This alert message warns you that your previous Bindery settings if any will be deleted.

DEL BIND SETUP?
YES/NO [NO]

Select YES if you wish to delete Bindery settings.

LOGIN TO BROWSE?
YES/NO [NO]

Select YES if a login is required to browse the NDS tree. Navigation trees enable you to find the login object for the file server on the NDS tree you wish to log in to. Select NO if a login is not required for browsing.

FIND LOGIN
OBJECT

If you selected YES in the previous screen, you may start to browse. Press Enter.

[CURRENT PATH]

Use the up and down arrows to scroll through options. To display objects below the level of the selected object, press Enter.

The current path of the previously selected object appears in the top line of the LCD display. The first item in the scrollable Object list appears in the second line. Use the arrow keys to browse the NDS objects listed in the display.

The '.' option moves you up one level on the tree; pressing Enter puts the previous second line object on the top line and displays the next lower level object on the tree on the second line. When you see the login object in the second line, press Enter. From any screen, press Enter to accept an object, or Menu to escape.

LOGIN OBJECT:

Use the up and down arrow keys to select a login name and press Enter.

ENTER PASSWORD

Use the arrow keys to enter the password. Press Enter to accept the password.

BROWSE TREE TO
PRINT SERVER

To begin navigating to the Print Server, Press Enter.

[NDS TREE NAME]

The NDS tree name appears in the top line of the LCD display. The first item at a level below the tree name appears in the second line. Use the arrow keys to browse the NDS objects listed in the display. Press Enter to accept an object.

[CURRENT PATH]

The current path of the previously selected object appears in the top line of the LCD display. The first item in the list of objects at the next level down appears in the second line. Use the arrow keys to browse the NDS objects listed in the display.

After choosing an object, press Enter to display the next lower level objects. Choose ‘.’ and press Enter to go up the tree. When you see the name of the print server, press Enter and PRINT SERVER will appear in the first line indicating that the listed entry has been chosen.

PRINT SERVER

Use the up and down arrow keys to scroll through the list of available print servers. After selecting a server, press Enter. If the print server login requires a password, the ENTER PASSWORD screen appears. If a password is not required, the PRINT Q SEARCH screen appears.

ENTER PASSWORD

Use the arrow keys to enter the password. Press Enter to accept the password.

PRINT Q SEARCH:
ENTIRE NDS TREE/SUBTREE [ENTIRE NDS TREE]

Press Enter if you want the printer to search the entire NDS tree for the print queue object. Use the arrow keys to designate a subtree object. The printer will search for queues below this object. Press Enter.

BROWSE TO PRINT
Q SUBTREE ROOT

This message is displayed if you selected SUBTREE in the previous screen. To advance to the NDS browse screens, and browse to the print queue root, press Enter.

Navigate the NDS objects as before. Press Enter to display objects below the level of the selected object in the previous screen's second line.

When you see the print queue subtree object in the second line, press Enter. In the next screen, scroll to display “.” in the second line and press Enter to end your search.

PRINT Q ROOT

The selected object is displayed. Press Enter to accept.

Bindery Setup

The following screens are used for Bindery setup. Be sure that the printer is connected to the network and that you have already configured one or more Netware 3.x file servers with a print server and a print queue for print jobs. Note that you can also configure Netware 4.x servers to run in Bindery emulation mode, but you cannot add a 4.x server running in emulation mode that is on the tree you selected in NDS Setup. For more information on setting up printing using Novell NetWare, see “Configuring a NetWare server for printing” on page 1-10.

The NetWare server must be running. You need a login name, and a password, if one has been set.

ENABLE BINDERY
YES/NO [YES]

Use this option to enable bindery emulation services.

NOTE: The following three screens appear only if earlier Bindery settings exist.

BINDERY SETTINGS
VIEW/CHANGE/SKIP/REMOVE FSERVER [VIEW]

Use the up and down arrow keys to scroll through menu options. Select VIEW to display a list of Novell file servers already connected to the printer. Select CHANGE to display a list of all available servers in order to add one or change the print server setting. Select REMOVE FSERVER to display a list of connected servers that you can disconnect. Select SKIP to skip bindery options and advance to the POLLING INT. screen.

CONNECTED SERVERS

If you choose VIEW in the BINDERY SETTINGS screen, use the up and down arrow keys to view the list of connected servers. Press Enter to skip the remaining bindery options and proceed to the POLL INT screen.

REMOVE FSERVER

If you choose REMOVE FSERVER in the BINDERY SETTINGS screen, use the up and down arrow keys to scroll through the connected servers. After selecting a server to remove, press Enter. The POLL INT screen is displayed next.

AVAILABLE SERVERS

If you choose CHANGE in the BINDERY SETTINGS screen, use the up and down arrow keys to scroll through a list of all available servers. After selecting a server to add or modify, press Enter. If a password is required to login to the server, the FILE SERVER LOGIN screen is displayed.

FILE SERV LOGIN

Use the up and down arrow keys to scroll through options: Supervisor, Admin, or Enter Login Name. Press Enter to accept an option.

ENTER LOGIN NAME

This screen is displayed only if Enter Login Name is selected as file server login. Use the arrow keys to enter the login name. Press Enter to accept the password.

FSERVER PASSWORD

Use the arrow keys to enter the password.

PRINT SERVER

Use the up and down arrow keys to scroll through the list of print servers defined for the selected file server. After selecting a print server, press Enter. If a password is required to log in, the PSERVER PASSWORD screen is displayed.

PSERVER PASSWORD

Use the arrow keys to enter the password. Press Enter to accept the password. If fewer than eight file servers are connected, the Another FS? screen is displayed. If the maximum number of file servers are connected, the POLL INT (SEC) screen is displayed.

ANOTHER FS?
YES/NO [NO]

Select YES to redisplay a list of available servers you may connect to. Select NO to stop adding file servers and display the POLL INT screen. You can connect the printer to a maximum of eight Novell files servers at once.

Polling interval

POLL INT. (SEC)
1-999 [15]

Use the up and down arrow keys to specify the interval, in seconds, at which the printer communicates with the Novell server.

NOTE: If you select a short interval, the amount of network traffic increases; this may slow down other network jobs.

SMB Setup

Server Message Block (SMB) is a point-to-point file sharing and printing protocol, and the default printing method of most Windows applications. SMB runs on top of TCP/IP and does not require IPX. When file and printer sharing for Microsoft clients is enabled, SMB can be run on Windows 95/98 and Windows NT.

For information on setting up SMB printing from your computer, see “Setting up SMB printing with Windows 95/98 and Windows NT” on page 1-14.

ENABLE SMB
YES/NO [NO]

Use this option to enable network communication using SMB.

AUTO NETBIOS
YES/NO [NO]

Select YES if you want the printer to search the local segment of your network for the WINS server and connect automatically. SERVER NAME will appear as the next setup option.

NOTE: The WINS server or a relay agent must be on the local segment in order to use the AUTO NETBIOS option.

USE NAME SERVER
YES/NO [NO]

This option appears only if you selected NO to AUTO NETBIOS. Select YES to designate a specific WINS (Windows Internet Name Server) server as an SMB server. You will then be prompted to enter this server's IP address.

NAME SERVER IP
[127.000.000.001]

Use the arrow keys to enter the IP address of the WINS server you wish to use.

SERVER NAME

Use the arrow keys to enter a name for the printer (SMB server).

SERVER COMMENT

Use the arrow keys to enter a comment about the printer (SMB server). This name will identify the printer in the Windows Network Neighborhood. For example, "Production use only." Once set, this comment will appear in the second line of the LCD when the SERVER COMMENT screen is displayed. When the printer is selected on a client machine, the server comment will appear under the Details section of the Server information window.

DOMAIN NAME

Use the arrow keys to enter the domain name or workgroup of the printer (SMB server).

Language Setup

The PANEL LANGUAGE menus are used to select a language for the operation panel, pages, and Fiery WebTools.

PANEL LANGUAGE


Press Enter to advance to the panel language screen.

SELECT
ENGLISH/DUTCH/SPANISH/ITALIAN/GERMAN/FRENCH [ENGLISH]

Select a language for the operation panel. Press Enter, press Menu, and choose RESTART PRINTER in the RESETS menu.

Printing a Test page

There are several pages you can print from the operation panel. This section contains instructions for printing a Test page, and the next section contains instructions for printing additional pages.

| Page: | Description: |
|--------------------|---|
| Configuration page | A page that gives the current device configuration and lists the selected options for all Setup menus |
| Job Log | <p>A list of the most recently printed jobs</p> <p>For information about using the WebSpooler to view and manipulate jobs in the Job Log, see the <i>User's Guide</i>.</p> <p> NOTE: This option is available only if your printer has an optional hard disk drive installed.</p> |
| PCL Font List | A list of PCL fonts resident on the printer |
| PS Font List | <p>A list of PostScript fonts resident on the printer</p> <p>NOTE:</p> |
| Test page | <p>A Test page that enables you to confirm that the printer is properly connected</p> <p>This page includes samples of color so you can troubleshoot printing problems as well as such information as: printer name, enabled network protocols and amount of memory.</p> |

You can print a Test page before you set up the Fiery 500 or at other times from the READY or the ENERGY SAVE MODE screen.

TO PRINT A TEST PAGE:

1. Turn on the printer and allow it to warm up.

Messages appear on the operation panel as the printer runs through its power-up tests.

2. From the Ready screen, press the Menu key and then the up arrow key on the operation panel.

PRINT PAGES FROM LIST is displayed.

3. Press the Enter key to display the first selection.
4. Press the up and down arrow keys until you see PRINT TEST PAGE and press Enter.
The printer prints a Test page.
5. Examine the quality of the Test page.
The Test page includes a color sample as well as the printer's name, enabled network protocols, and memory configurations.

Printing additional pages

In addition to a Test page, you can also print a Configuration page, PostScript Font list, PCL Font list, or Job Log.



NOTE: You can print the Job Log only if your printer has an optional hard disk drive installed.

The Configuration page lists information about the printer, the setup, and the number of printer fonts. It's a good idea to print a Configuration page before you make setup changes, in case you need to restore some settings later.

TO PRINT A CONFIGURATION PAGE OR ADDITIONAL PAGES:

1. From the Ready screen, press the Menu key and then the up arrow key on the operation panel.
The PRINT PAGES FROM LIST screen is displayed.
2. Press the Enter key to display a list of available pages.
3. Press the arrow keys until you see PRINT CONFIGURATION and press Enter.
The printer prints a Configuration page.
4. Or press the arrow keys to display the name of the page you would like to print and press Enter.
The printer prints the page you selected.

Chapter 3: Installing Windows Software

This chapter describes installing software and setting up printing from a Windows-based computer running Windows 95/98 or Windows NT.

See the Chapter 1 for instructions on how to connect the printer to a computer or to a network.

General steps for installing Windows software

The general steps for installing the Fiery 500's user software from the CD are:

- Install the PostScript Printer Driver.
- If you want to print using the PCL page description language, install the PCL printer driver.
- Set up the printer driver to communicate with the Fiery 500 over the network or through the parallel port.

Instructions for installing PostScript and PCL printer drivers for Windows 95/98 are given below. Instructions for installing PostScript and PCL drivers for Windows NT 4.0 systems are given later in this chapter.

If you are setting up a printer that will be shared by many users, and you would like to make the printer drivers available to others, you can exit the installer program and manually copy the printer drivers and files from the User Software CD to the location of your choice. Use this method, for example, to copy printer drivers to a server on your network, or to a floppy disk.

NOTE: Windows 95/98 Plug-n-Play specifies the automatic detection of any new hardware installed on your computer. If your printer is connected to the computer via the parallel port and it is powered on when your computer is restarted, a dialog box indicating new hardware has been detected will appear, prompting you to install the manufacturer's software. Install the printer driver for your printer by selecting Other Location, and navigating to the PostScript or PCL printer driver directory on the User Software CD. When you have installed the printer driver of your choice, be sure to specify optional devices installed on your printer to enable features related to their use.

Setting up PostScript or PCL printing with Windows 95/98

To set up the Fiery 500 as a PostScript printer you must install the PostScript Printer Driver and PPD file for Windows 95/98. To set up the Fiery 500 as a PCL printer you must install the PCL Printer Driver and PDD file. These files are included on the User Software CD.

If autorun is enabled on your computer, when the User Software CD is inserted in the CD ROM drive the installer runs automatically, allowing you to specify which files to install on your computer.

NOTE: If autorun is not enabled, you can run the installer by double-clicking the CD-ROM drive icon in My Computer, or by double clicking the Setup.exe file in the installer folder on the User Software CD.

TO INSTALL THE POSTSCRIPT OR PCL PRINTER DRIVER:

1. Insert the User Software CD in your CD-ROM drive.
Follow the instructions on screen.
2. Choose the 'Typical', 'Compact', or 'Custom' installation option.

| Choose this: | To install: |
|--------------|---|
| Typical | The Adobe PostScript printer driver and Fiery 500 PPD and the PCL printer driver and PDD. Also installs the CMYK/PANTONE color reference files, PS3 fonts, and Adobe Type Manager. |
| Compact | Only the PS printer driver and PPD. |
| Custom | Only the files you select—copies them to your hard disk. You can select any or all of the following: PS driver and PPD PCL driver and PDD CMYK/PANTONE color reference files PS3 fonts Adobe Type Manager |

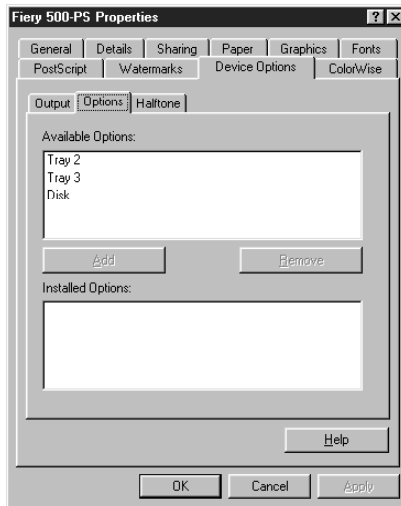
NOTE: You should restart your computer after installing the PCL driver.

Specifying installed devices

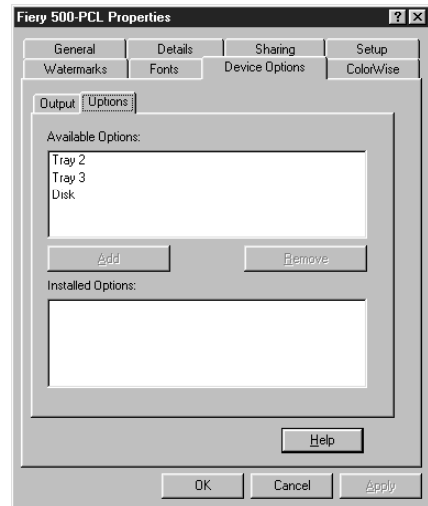
When the printer driver is installed, specify the optional devices installed on your printer to enable use of options relating to those devices.

TO SPECIFY DEVICES INSTALLED ON THE FIERY 500:

1. From the Windows Start menu, choose Settings > Printers.
2. Select the Fierly 500 PostScript printer icon, or if you are using the PCL driver, the Fierly 500 PCL printer icon, and choose Properties from the File menu.
3. Click the Device Options > Options tab, and specify the devices installed on the printer.



PostScript



PCL

Tray 2—Select if optional Tray 2 is installed.

Tray 3—Select if optional Tray 3 is installed.

Disk—Select if an optional hard disk drive is installed.

4. Select from the Available Options list and click Add to move the option to the Installed Options list.
5. Click OK.

Completing the Windows 95/98 connection

To print from Windows 95/98 you need to:

- Set up the Fiery 500 to accept print jobs from your computer.
- Configure a port on each Windows 95/98 computer for the network or connection type.

Setting up parallel printing with Windows 95/98

The following procedure describes how to prepare the computer for parallel printing.

TO INSTALL THE PRINTER FOR PARALLEL PORT PRINTING:

1. Click the Start key, select Settings, and click Printers.
2. Select the Fiery 500 printer icon and choose Properties from the File menu.
3. Click the Details tab and make sure the box "Print to the following port:" reads as follows: LPT 1 (Printer Port) or LPT1 (ECP Printer Port).
4. If you changed the port setting, click Apply.

You are now ready to print from your applications to the Fiery 500 with the parallel port. To confirm the connection, print a test page.

5. Click the General tab.
6. Click the Print Test Page key to print a test page.

Setting up IPX (Novell) printing with Windows 95/98

Complete the setup for the IPX (Novell) connection as follows:

- Configure the Novell network and file server for handling Fiery 500 print jobs.

The file server should be configured with a print server and print connection for the Fiery 500. For details, see your NetWare documentation.

- Prepare the Fiery 500 for IPX printing.
- Set up the IPX connection on the workstation.

NetWare protocols (NWLink IPX/SPX Compatible Transport) and NetWare client services should already be installed on the Windows NT workstation.

BEFORE YOU BEGIN:

- Verify the Fiery 500 has been configured for Novell printing in Network Protocol Setup.

For more information about setting up the printer for IPX (Novell) printing see “Using the printer with an IPX (Novell) network” on page 1-2.

TO SET UP IPX (NOVELL) PRINTING:

1. Open the Windows Control Panel.
2. Double-click the Network icon.
Make sure that IPX/SPX-compatible Protocol is listed in the Installed Network Components section. For instructions, see your Windows documentation.
3. Click OK then close the Control Panel.
4. Click the Start key, choose Settings, and then choose Printers.
5. Select the printer icon, and choose Properties from the File menu (or right-click the printer icon, and left-click Properties).
6. Click the Details tab, and click Add Port.
A list of connection options is displayed.
7. In the Add Port dialog box, specify the network path, or click Browse for a display of your network environment.
8. If you are using a NetWare file server, double-click the icon of the server you want to use for printing to the Fiery 500.
9. Click the printer icon labeled with the NetWare print queue you will use and click OK.

10. In the Add Port dialog box, verify that the network path is updated, and click Apply.

To confirm the connection, you can print a Windows test page.

11. Click the General tab in the Properties dialog box, and click Print Test Page.

You are ready to print to the Fiery 500 from Windows applications. When you select Print, jobs are routed to the print queue on the NetWare file server, and then sent to the Fiery 500.

Setting up SMB printing for Windows 95/98

If you don't have a Novell network, you can print via SMB printing (also known as Windows printing or WINS printing). Printing by this method allows you to print from your computer to a particular print connection (Hold, Print, or Direct) on the Fiery 500.



NOTE: The Hold and Print queues are available only if your printer has a hard disk drive installed.

To set up printing to a second or third print connection, you must install a new printer for each connection and repeat the procedure “To set up SMB printing on Windows 95/98:” on page 3-7. If you install more than one printer, give each a descriptive name during printer driver installation, such as Fiery 500-Print or Fiery 500-Hold, so you can easily identify printers.

BEFORE YOU BEGIN:

1. Configure the Fiery 500 for SMB printing in Network Service Setup.

For more information, see Chapter 2.

2. Print the Fiery 500 Configuration page.

You need information from the Configuration page to specify settings on your computer, such as the Server Name and IP address of the WINS Name Server.

3. Save any documents in open programs.

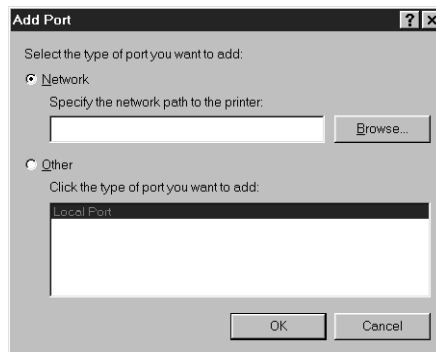
You are prompted to restart Windows after this procedure, so be sure to save any documents.

4. Prepare your computer for SMB printing.

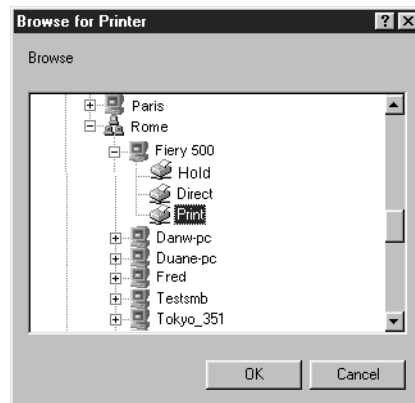
See “Setting up SMB printing with Windows 95/98 and Windows NT” on page 1-14.

TO SET UP SMB PRINTING ON WINDOWS 95/98:

1. From the Windows Start menu, choose Settings and click Printers.
2. Select the printer icon, and choose Properties from the File menu.
3. Click the Details tab in the Properties window and click Add Port.
4. In the Add Port dialog box, click Network and click Browse to display your network environment.



5. Expand the levels to locate your printer and the queue you want to print to.



NOTE: If there are several Fiery 500 printers on your network and they have the same printer name, only one icon will be used to indicate the printer name. You should assign unique names to each printer on your network.

Three queues will automatically be created when the printer driver is installed. These queues are represented on the network by the Direct, Print and Hold printer icons.



NOTE: The Print and Hold queues are only enabled when your printer has an optional hard disk drive installed.

The printer you are browsing for is the SMB Name Server. If you do not know the name of the SMB Name Server and SMB printing has been enabled on the printer, refer to the printer's Configuration Page for this information.

For instructions on printing a Configuration Page, see "Printing additional pages" on page 2-28.

6. Under the printer's name, select the queue you wish to print to and click OK.
7. In the Add Port dialog box, verify that the network path is correct and click OK.
8. To confirm the connection, click the General tab in the Properties dialog box.
9. Click Print Test Page and click OK.

If the test page prints successfully, you are ready to print from the computer.

Setting up PostScript or PCL printing with Windows NT

Printing with Windows NT 4.0 begins with installation of the PostScript printer driver and the Fiery 500 PPD or PCL printer driver and the Fiery 500 PDD, and finishes by configuring a particular type of connection between the workstation and the Fiery 500. With this version of software, Fiery 500 files support Intel-based Windows NT 4.0.

Adding a printer to a local system requires that you log in to your local Windows NT workstation (not the network server domain) and that you are a member of the Administrators group.

If autorun is enabled on your computer, when the User Software CD is inserted in the CD-ROM drive, the installer on the User Software CD runs automatically, allowing you to specify the files to install on your computer.

NOTE: If autorun is not enabled, you can run the installer by double-clicking the CD-ROM drive icon in My Computer, or by double clicking the Setup.exe file in the Installr folder on the User Software CD. If optional devices are installed on your printer, follow the instructions in the next section as well.

TO INSTALL THE FIERY 500 AS A LOCAL POSTSCRIPT OR PCL PRINTER:

1. Insert the User Software CD in your CD-ROM drive.
Follow the instructions on screen.
2. Choose the 'Typical', 'Compact', or 'Custom' installation option.

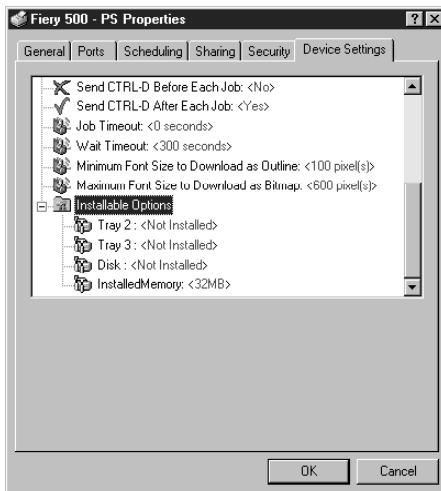
| Choose this: | To install: |
|--------------|--|
| Typical | The Adobe PostScript printer driver and Fiery 500 PPD and the PCL printer driver and PDD. Also installs the CMYK/PANTONE color reference files. |
| Compact | Only the PS printer driver and PPD. |
| Custom | Only the files you select—copies them to your hard disk. You can select any or all of the following: PS driver and PPD PCL driver and PDD CMYK/PANTONE color reference files |

Specifying installed devices

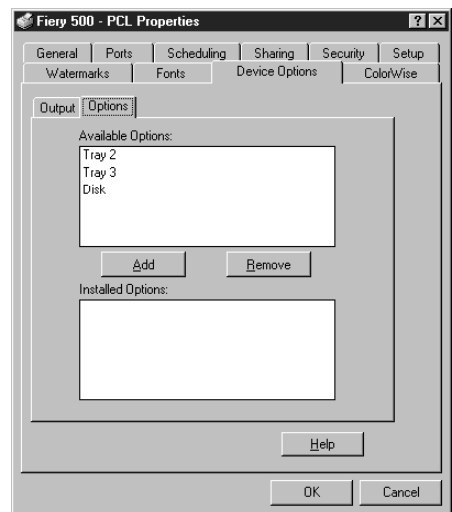
When the printer driver is installed, specify the optional devices installed on your printer to enable use of options relating to those devices.

TO SPECIFY OPTIONS INSTALLED ON THE FIERY 500:

1. Choose Settings > Printers from the Start menu.
2. Select the Fiery 500 PostScript printer icon, or if you are using the PCL driver, the Fiery 500 PCL printer icon, and choose Properties from the File menu.
3. Click the Device Settings tab, and scroll down to Installable Options.
4. Configure the following options to correspond with the features installed on the printer:



PostScript



PCL

Tray 2—Select if optional Tray 2 is installed.

Tray 3—Select if optional Tray 3 is installed.

Disk—Select if an optional hard disk drive is installed.

NOTE: Installed Memory is not an option that you can set from the printer driver. Any change you make to this setting will have no effect.

5. Select the option and then select **Installed in the Change ... Setting** area at the bottom of the dialog box (PostScript) or select the option in the **Available Options** list and click **Add (PCL)**.
6. Click **OK**.

Completing the Windows NT 4.0 connection

To print from Windows NT 4.0 you need to:

- Set up the Fiery 500 to accept print jobs from your computer.
- Configure a port on each Windows NT computer for the network or connection type.

Setting up parallel printing on Windows NT

Once you have installed the printer drivers, complete the setup for parallel port printing as follows:

TO SET UP PARALLEL PRINTING:

1. Click the **Start** key, choose **Settings**, and then choose **Printers**.
2. Double-click the printer icon, and choose **Properties** from the **Printer** menu.
In the **Ports** property sheet, confirm that **LPT1 (Local Port)** is checked. The Fiery 500 is ready to accept parallel port print jobs from your computer.
3. Select the **General** property sheet, and click **Print Test Page**.
When you select **Print**, your files are sent over the parallel port connection to the Fiery 500.
4. Select the **Sharing** property sheet if you want to share the printer with network users. Select **Shared**, and select a share name.
Select the operating system or systems used by your network clients if you want to install a printer driver that those clients can automatically download when they connect. Click **OK**.
5. In the dialog box that appears, navigate to the location of the alternate printer driver to install.
6. Click **OK** to exit the **Printer Properties** dialog box.

Setting up IPX (Novell) printing with Windows NT

Complete the setup for the IPX (Novell) connection as follows:

- Configure the Novell network and file server for handling Fiery 500 print jobs.

The file server should be configured with a print server and print connection for the Fiery 500. For details, see your NetWare documentation.

- Prepare the Fiery 500 for IPX printing.
- Set up the IPX connection on the workstation.

NetWare protocols (NWLink IPX/SPX Compatible Transport) and NetWare client services should already be installed on the Windows NT workstation.

BEFORE YOU BEGIN:

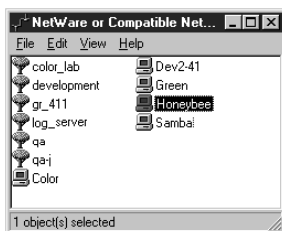
- Verify the printer has been configured for Novell printing in Network Protocol Setup.

For more information about setting up the printer for IPX (Novell) printing see “Network Protocol Setup” on page 2-14.

TO SET UP IPX (NOVELL) PRINTING FOR WINDOWS NT 4.0:

1. Double-click Network Neighborhood.
2. Double-click NetWare or Compatible Network.

A list of NetWare servers is displayed.

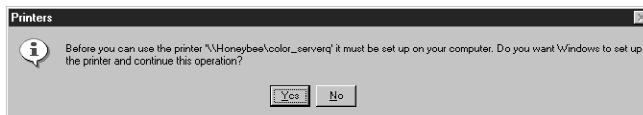


3. Double-click the NetWare Tree or File Server on which the network administrator defined a print connection for the Fiery 500.

You may have to log in to the file server as a guest to see the print connections.

4. Double-click the print connection defined for the Fiery 500.

If the NetWare server does not have a suitable driver for the Fiery 500 you may be asked if you want to set up the printer on your workstation.



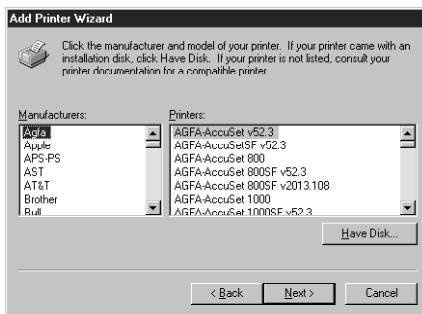
5. Click Yes.

The Add Printer Wizard appears.

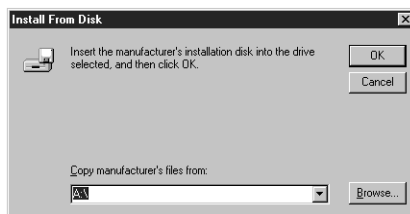
6. Specify if you print from MS-DOS programs and click Next.

If you select Yes, you will need to capture a printer port before continuing.

7. In the dialog box displaying lists of manufacturers and printers, click Have Disk.



The Install from Disk dialog box prompts you for the disk.



8. Type the name of the CD-ROM drive (for example, D:\), and click Browse. Browse to the English\Prntdrv\disk1 folder and click Open.

Make sure “Oemsetup.inf” is selected in the Look in box.

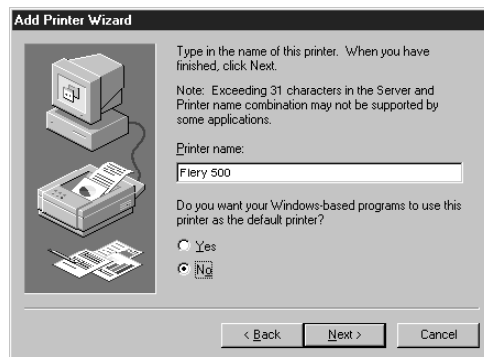
The path is copied to the Install from Disk dialog box.

9. Verify the path is correct, and click OK.

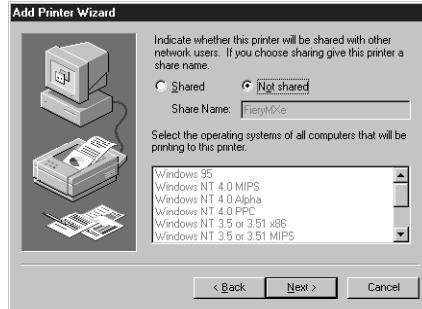


10. In the Printers box, select the Fiery 500 PostScript or PCL file and click Next.
11. Using a maximum of 20 characters, enter a name for the Fiery 500 (or leave the default name) in the Printer name box, and choose whether you want the Fiery 500 to be your default printer. Click Next.

NOTE: Entering more than 20 characters may cause printing problems with some network applications.



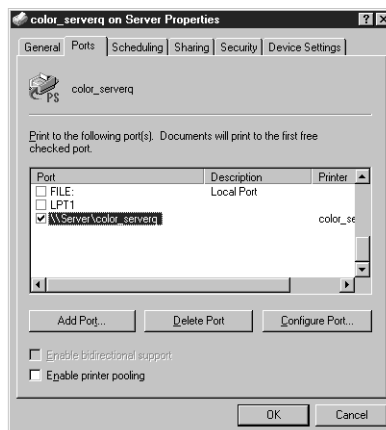
12. Indicate whether you want the printer installed as a shared printer. Click Next.



If you select **Shared**, you must also enter a **Share Name** for the printer (or leave the default name) and make selections from the list of operating systems used by client workstations.

13. Click **No** in the next dialog box to postpone printing a test page, and click **Finish**.
When installation is complete, a new printer window appears, with the name of the print queue on the NetWare server.
14. Choose **Properties** from the **Printer** menu and click the **Ports** tab.

The NetWare queue you just connected to is listed and checked as a port for the Fier500.



15. Click the **General** tab and click **Print Test Page**.

The Fiery 500 polls the NetWare server for print jobs in the print connection defined for the Fiery 500. When you print, your PostScript files are spooled to that connection and transmitted over the queue “port” to the Fiery 500.

The test page job is listed in the queue window until it is printed.

Setting up TCP/IP and LPR printing with Windows NT

Once you have installed the PostScript or PCL printer driver, complete the setup for the TCP/IP and lpr connection as follows:

- Prepare the Fiery 500 to accept print jobs using TCP/IP and lpr protocols.
- Configure the workstation for the TCP/IP connection.

Before you continue, ask the system administrator for the IP address assigned to the Fiery 500, as well as the subnet mask and gateway address, if they are used.

TO PREPARE THE FIERY 500 FOR TCP/IP AND LPR PRINTING:

1. With the Fiery 500 turned off, connect it to the network. Restart the printer.
2. Select **NETWORK PROTOCOL SETUP**. Enable TCP/IP and enter the appropriate settings for IP address, subnet mask and gateway address.

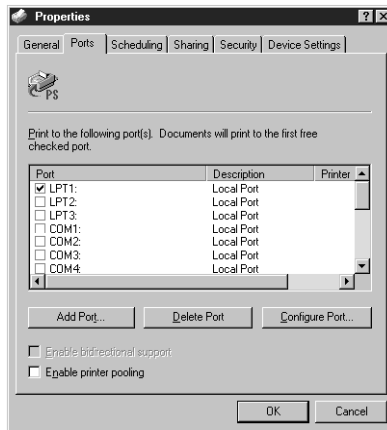
For details, see “Network Protocol Setup” on page 2-14.

3. Exit the setup menus.

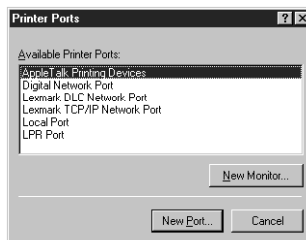
The TCP/IP Protocol and Microsoft TCP/IP Printing software should already be installed on the Windows NT workstation.

TO SET UP TCP/IP AND LPR PRINTING FOR WINDOWS NT 4.0:

1. Open the Printer Properties dialog box for the Fiery 500. Click Ports to display the Ports property tab.



2. Click Add Port.
The available port types are displayed.



3. Select LPR Port and click New Port.
If the LPR port is not listed, install the TCP/IP protocols. For details, see your Windows NT documentation.
4. In the "Add LPR compatible printer" dialog box, enter the IP address of the Fiery 500.
If your network uses Domain Name Services (DNS), enter the DNS name assigned to the Fiery 500 instead of the IP address.

5. Press **Tab** and type the internal name of the Fiery 500 in lowercase letters.



NOTE: Type this name exactly as shown; it is required for communication with the printer. The Hold and Print queues are available only if your printer has a hard disk drive installed.

The name must be one of these:

xjdirect
xjhold
xjprint

6. Click **OK**.

The workstation checks the address or DNS name that you entered and notifies you if it cannot resolve the address.

7. Close the **Printer Ports dialog box**.

The Ports property tab shows the new port configuration. You should now print a test page to verify the connection.

8. Click the **General tab** and click **Print Test Page**.

When you print, your files are sent over the LPR Port connection to the Fiery 500.

9. Click **OK** to exit the **Printer Properties dialog box**.

Setting up SMB printing for Windows NT 4.0

If you don't have a Novell network, you can print via SMB printing (also known as Windows printing or WINS printing). Printing by this method allows you to print from your computer to a particular print connection (Hold, Print, or Direct) on the Fiery 500.



NOTE: The Hold and Print queues are available only if your printer has a hard disk drive installed.

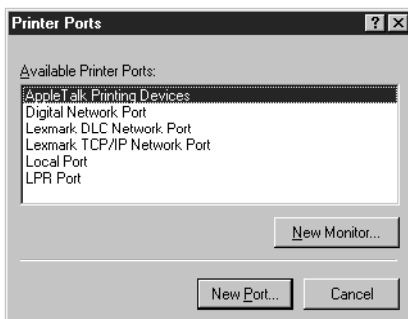
To set up printing to a second or third print connection, you must install a new printer for each connection and repeat the procedure "To set up SMB printing on Windows NT:" on page 3-19. If you install more than one printer, give each a descriptive name during printer driver installation, such as Fiery 500-Print or Fiery 500-Hold, so you can easily identify printers.

BEFORE YOU BEGIN:

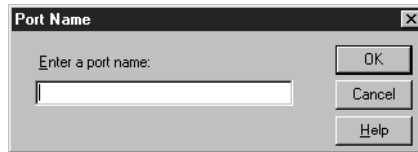
1. Configure the Fiery 500 for SMB printing in Network Service Setup.
For more information, see Chapter 2.
2. Print the Fiery 500 Configuration page.
You need information from the Configuration page to specify settings on your computer, such as the Server Name and IP address of the WINS Name Server.
3. Save any documents in open programs.
You are prompted to restart Windows after this procedure, so be sure to save any documents.
4. Prepare your computer for SMB printing.
See “Setting up SMB printing with Windows 95/98 and Windows NT” on page 1-14.

TO SET UP SMB PRINTING ON WINDOWS NT:

1. From the Windows NT Start menu, choose Settings, and click Printers.
2. Select the printer icon, and choose Properties from the File menu.
3. Click the Ports tab in the Properties window and click Add Port.



4. In the Printer Ports dialog box, select Local Port, and then click New Port.
The Port Name dialog box appears.



5. Enter the name of the printer port to print to, for example: \\Fiery500\print and then click OK.

Three queues will automatically be created when the printer driver is installed. These queues are represented on the network by the Direct, Print and Hold printer icons.



NOTE: The Print and Hold queues are only enabled when your printer has an optional hard disk drive installed.

The printer you are browsing for is the SMB Name Server. If you do not know the name of the SMB Name Server and SMB printing has been enabled on the printer, refer to the printer's Configuration Page for this information.

For instructions on printing a Configuration Page, see "Printing additional pages" on page 2-28.

6. To confirm the connection, click the General tab in the Printer Properties dialog box.
7. Click Print Test Page and click OK.

If the test page prints successfully, you are ready to print from the computer.

Setting up Fiery WebTools

The Fiery WebTools come pre-installed on your printer. Fiery WebTools allow you to manage your print jobs remotely from the Internet or from your company's intranet. The Fiery 500 has its own home page, from which you are able to select from a variety of functions including WebSetup, Status, WebSpooler, WebLink, and WebDownloader.



NOTE: WebSpooler is available only if your printer has a hard disk driver installed.

For information on using the Fiery WebTools, see the *User's Guide*.

In order for network users to access and use the Fiery WebTools, you need to set communication options in Network Protocol Setup on the operation panel. You also need to prepare each user's workstation to communicate with the Fiery 500 over the Internet or intranet.

Instructions below apply to IBM PC compatible computers using Token Ring or Ethernet protocols.

TO SET UP FIERY WEBTOOLS ON THE FIERY 500:

1. From the READY screen, press the Menu key on the printer's operation panel to access the printer setup menus.
2. Press the up arrow key until you see NETWORK PROTOCOL SETUP, and press the Enter key to access the TCP/IP screens.

In the next step you will enable TCP/IP network communication according to your network type. You will enable Ethernet communication, or if a Token Ring card is installed on your printer, you will enable Token Ring communication.

3. Use the right arrow key to advance to the TCP/IP-ETHERNET or TCP/IP-TOKEN RING screens. Select YES to enable the appropriate communication protocol.
4. Use the arrow keys to advance to the ETH IP ADDRESS or the TR IP ADDRESS screens. Enter a valid, unique IP Address for the Fiery 500 or select ENABLE AUTO IP.

In order for client workstations to access Fiery WebTools, they must use a web browser. The recommended browser versions are:

- For Macintosh computers, Netscape Navigator 4.06 and later,
- For Windows computers, Netscape Communicator 4.06 and later or Microsoft Internet Explorer 4.x and later.

NOTE: Note also that Windows NT 4.0 users must download the Windows NT 4.0 Service Pack 3 or later in order to run the WebDownloader with Netscape Communicator 4.x.

Netscape and Microsoft continue to release frequent updates to their browsers. As support can not be guaranteed for all versions, use the versions specified above for best results.

TO SET UP FIERY WEBTOOLS ON EACH CLIENT WORKSTATION:

1. Enable TCP/IP networking.
2. Make sure the workstation has a valid, unique IP address.
3. Make sure the workstation is installed with an Internet browser.
4. Start your Internet browser application.
5. Enter the IP address or DNS name of the printer in the browser's URL line.
The printer's home page appears.

Installing additional software for Windows users

Additional software, including Adobe Type Manager (ATM) (for Windows 95/98 only), a PANTONE color reference file, a CMYK reference file, and a Fiery 500 ICM profile (for Windows 95/98 only), is included on the User Software CD.

When a Typical installation is performed on Windows 95/98 or Windows NT using the installer, all files are automatically installed to a directory on your hard drive called Fiery 500. When a Compact installation is performed, only the printer drivers appropriate to your system are installed. You can also select which

additional files to install during a Custom installation procedure, or you can copy the additional files from the User Software CD to a directory of your choice as they are needed.

Some files, such as fonts, will need to be moved to specific locations; others can be moved to a directory of your choice.

PostScript and True Type fonts

Regular, bold, italic, and bold italic versions of PostScript Type 1 fonts, as well as True Type fonts are provided in the PS3 folder on the User Software CD. These fonts correspond to the PS3 fonts installed on your printer. To use these fonts in applications and to properly display them on your monitor, you will need to install them on your computer. For information on installing fonts see the following section.

For a complete list of fonts included with the printer, see Appendix A of the *User's Guide*.

Adobe Type Manager (Windows 95/98)

Adobe Type Manager (ATM) is included on the User Software CD. This application can be used to transfer Type 1 fonts to the printer's RAM or hard disk drive, or to manage fonts on the printer. Manual downloading of fonts not already provided on the printer eliminates the need for automatic downloading of fonts used by a document, which speeds printing. You can also:

- Install the PostScript Type 1 fonts that correspond to those installed on your printer
- Print using PostScript fonts on non-PostScript printers
- Improve the screen display of PostScript fonts

When a typical installation is performed all the elements needed to install Adobe ATM for Windows 95/98 are copied to the Fiery 500 directory.

See the instructions provided with ATM for information on how to use the appropriate version for your system.

NOTE: ATM cannot be used to install TrueType fonts, which are also included in the PS3 folder. These fonts can, however, be installed on Windows 98, Windows 95, and Windows NT 4.0 using the Control Panel > Fonts > File > Install New Font command. For additional information on installing TrueType fonts on Windows platforms, see the documentation that came with your system.

CMYK color reference file

The CMYK Color Reference file is used as a reference for graphics applications that allow you to specify color as CMYK values. These pages are provided as a PostScript file, which can be printed using a PostScript downloader utility, such as WebDownloader. By downloading the file to your printer you can see how the colors print on the Fiery 500. Copy the file from the English\Clrfiles folder on the User Software CD to a folder of your choice.

For information about color matching using CMYK color reference files, see “Choosing colors in PostScript applications” in the *User’s Guide*.

PANTONE color reference file

You can print CMYK representations of PANTONE numbered color swatches and use the pages as a reference to see how these colors print on your printer. These pages are provided as a PostScript file, which can be printed using a PostScript downloader utility, such as WebDownloader. Copy the file from the English\Clrfiles folder on the User Software CD to a folder of your choice.

For information about color matching using PANTONE color reference files, see “Choosing colors in PostScript applications” in the *User’s Guide*.

4

Chapter 4: Installing Macintosh Software

This chapter describes installing software and setting up printing from a Macintosh computer. Serial port printing from Macintosh computers is not supported by the printer. For instructions on how to connect your printer to a network, see Chapter 1.

General steps for installing Macintosh software

The general steps for installing the Fiery 500's software from the CD and setting up printing from a Macintosh computer are:

- Enable Ethernet and AppleTalk from the printer's operation panel.
- Enable AppleTalk in the Chooser on the Macintosh.
- Install the Adobe PostScript Printer Driver.
- Set up the printer in the Chooser.
- Copy additional color reference files, sample files and font files from the User Software CD as needed.

Installing Macintosh printing software

To set up the Fiery 500 as a PostScript printer, you must install the PostScript printer description file (PPD) that corresponds to your printer and the Adobe PostScript Printer Driver (version 8.5.1 supports PostScript 3) provided on the User Software CD. Printer drivers provide a way to communicate information on print jobs between your applications and the Fiery 500 (and any other PostScript printer connected to your computer).

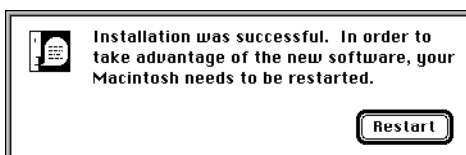
Installing the Adobe PostScript printer driver

Printer drivers provide your applications with information about your printer, such as the fonts and paper sizes available. Printer description files give you access to all printing features of the printer driver and applications. When you use the Adobe PS Printer installer, the printer description file is installed automatically.

NOTE: To print to the Fiery 500, you need Apple system software version 7.5 or later

TO INSTALL THE POSTSCRIPT PRINTER DRIVER:

1. Insert the User Software CD in the CD ROM drive and open the English:Printer Driver folder.
2. Double-click the Installer icon.
3. Click Yes to acknowledge that your computer needs to be restarted after the installation.



4. Click Install in the dialog box that appears.
The Adobe PostScript Printer Driver and the PPD that corresponds to your printer are installed
5. Click Restart in the dialog box informing you that installation is complete and restart your computer.

NOTE: If you operate the Fiery 500 in a service department or your organization, you might want to provide copies of the printer driver, printer description file, and related documentation to users that will be sending you print jobs. This will ensure that jobs they create and print to files are properly formatted for printing to the Fiery 500. Be sure to copy the complete contents of the Adobe PS folder.

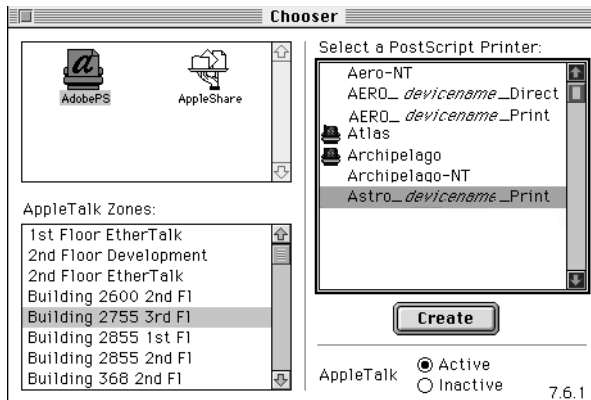
Setting up the Fiery 500 in the Chooser

After you install the printer driver and printer description files, you need to set up the Fiery 500 in the Chooser. This section describes how to set up the Fiery 500 with the Adobe PostScript Printer Driver.

TO SET UP THE PRINTER IN THE CHOOSER:

1. Select Chooser from the Apple menu.
2. Make sure AppleTalk is active.

3. Click the Adobe PS Printer icon.



4. Select the correct AppleTalk zone if necessary.
5. Select the name of your Fiery 500 printer.
6. Click Create.

The Adobe PostScript printer driver automatically selects the correct printer description file for your printer.

7. Click Setup and then Configure to confirm that the options installed on your printer have been correctly recognized. Click OK to close each of the windows.
8. Close the Chooser.



If your printer has an optional hard disk drive installed, the Direct, Print, and Hold connections automatically appear in the Chooser. Select Fiery 500_Direct to print to the direct connection, Fiery 500_Print to print to the Print queue, or Fiery 500_Hold to print to the Hold queue from the printers list. If your printer does not have an optional hard disk drive, the printer's Direct connection will appear in the list.

The first time you select the printer's Direct, Print, or Hold queues, you will be prompted to select a PPD.

Installing the Fiery 500 ICC printer profile

The Adobe PostScript driver can convert RGB colors of a file to a specified CMYK device target using ICC (Image Color Control) technology. The color space target defined by the Fiery 500 ICC, or printer profile, is included on the User Software CD. This profile is optimized for color conversions sent to a Fiery 500.

NOTE: Printer profiles selected via ColorSync affect ColorSync-compliant applications only.

TO INSTALL THE FIERY 500 ICC PRINTER PROFILE:

1. On the User Software CD, double-click to open the English:ColorSync™ Profiles folder.
 2. Double-click the Installer icon.
 3. Select ColorSync™ Profiles, and click Install.
 4. Specify the locations into which to install each item.
Browse to the System Folder:Preferences:ColorSync™ Profiles folder.
 5. Click Install.
 6. If prompted, click Quit to close the software installer.
 7. Choose Control Panels>ColorSync System Profile from the Apple Menu.
 8. Click Set Profile.
 9. From the list of ColorSync profiles, select EFIRGB ICC and click Select.
When selected as the ColorSync system profile, EFIRGB ICC sets the optimal source color space for printing to the Fiery 500. The color space set by the EFIRGB ICC profile is the same as that set by the EFIRGB setting of the RGB Source print option. For more information, see the *User Guide*.
- NOTE:** The RGB Source print option setting overrides the ColorSync system profile setting.
10. Close the ColorSync System Profile window.

Setting up Fiery WebTools

Fiery WebTools allow you to manage your printer remotely from the Internet or from your company's intranet. The printer has its own home page, from which you are able to select from a variety of functions including WebSetup, Status, WebSpooler, and WebLink. For information on using the Fiery WebTools, see the *User's Guide*.



NOTE: WebDownloader is not supported for Macintosh computers. WebSpooler is only available if your printer has an optional hard disk drive installed.

In order for network users to access and use the Fiery WebTools, you need to set communication options in Network Protocol Setup on the operation panel. You also need to prepare each user's workstation to communicate with the Fiery 500 over the Internet or intranet.

NOTE: Instructions below apply to Macintosh computers using Ethernet protocols.

TO SET UP FIERY WEBTOOLS ON THE FIERY 500:

1. From the READY screen, press the Menu key on the printer's operation panel to access the printer setup menus.
2. Press the up arrow key until you see NETWORK PROTOCOL SETUP, and press the Enter key to access the TCP/IP screens.

In the next step you will enable TCP/IP network communication according to your network type.

3. Use the right arrow key to advance to the TCP/IP-ETHERNET screens. Select YES to enable the Ethernet communication protocol.
4. Use the arrow keys to advance to the ETH IP ADDRESS screen. Enter a valid, unique IP Address for the Fiery 500.

4

In order for client workstations to access Fiery WebTools, they must use a web browser. The recommended browser version is Netscape Navigator 4.06 and later for Macintosh computers.

Netscape continues to release frequent updates to their browser. As support cannot be guaranteed for all versions, use the version specified above for best results.

TO SET UP FIERY WEBTOOLS ON EACH CLIENT WORKSTATION:

1. Enable TCP/IP networking.
2. Make sure the workstation has a valid, unique IP address.
3. Make sure the workstation is installed with an Internet browser.
4. Start your Internet browser application.
5. Enter the IP address or DNS name of the printer in the browser's URL line.
The printer's home page appears.

Installing additional software for Macintosh users

Additional software, including Adobe Type Manager (ATM), PostScript screen fonts, a PANTONE color reference file, and a CMYK reference file are included on the User Software CD. Copy these files from the Files folder on the User Software CD to a folder of your choice. Some files, such as fonts, will need to be moved to specific locations; others can be moved to a folder of your choice.

Adobe Type Manager

Adobe Type Manager (ATM) is included on the User Software CD. This application can be used to transfer Type 1 fonts to the printer's RAM or hard disk, or to manage fonts on the printer. Manual downloading of fonts not already provided on the printer eliminates the need for automatic downloading of fonts used by a document, which speeds printing. You can also:

- Print using PostScript fonts on non-PostScript printers
- Improve the screen display of PostScript fonts

The ATM 4.0.2 installer installs both ATM and the Adobe Downloader 5.0.5 utility, which can be used to download PostScript files and non-resident printer fonts to the printer. You can also use the Adobe Downloader to send the PANTONE and CMYK color reference files to the printer. See the instructions provided with the ATM package to install and use ATM for Macintosh.

PostScript and TrueType fonts

In addition to TrueType fonts, regular, bold, italic, and bold italic versions of PostScript Type 1 fonts are included in the PS3 folder on the User Software CD.

ATM cannot be used to install TrueType fonts. These fonts can, however, be installed by dragging a copy of each from the PS3 fonts folder on the User Software CD to the System Folder:Fonts folder.

For a complete list of fonts included with the Fiery 500, see Appendix A of the *User's Guide*.

CMYK color reference file

The CMYK Color Reference file is used as a reference for graphics applications that allow you to specify color as CMYK values. This reference page is provided as a PostScript file, and can be printed using a PostScript downloader utility, such as Adobe Downloader. By downloading the file to your printer you can see how the colors print on the printer. Copy this file from the English:Color Reference folder on the User Software CD to a folder of your choice.

For information about color matching using CMYK color reference files, see “Choosing colors in PostScript applications” in the *User's Guide*.

PANTONE color reference file

You can print CMYK representations of PANTONE numbered color swatches and use the pages as a reference to see how these colors print on your printer. This reference page is provided as a PostScript file, and can be printed using a PostScript downloader utility, such as Adobe Downloader. Copy this file from the English:Color Reference folder on the User Software CD to a folder of your choice.

For information about color matching using PANTONE color reference files, see “Choosing colors in PostScript applications” in the *User's Guide*.



Appendix A: Menu Help

This appendix is a graphic overview of options available from the operation panel of the Fiery 500. For a detailed explanation of how to use the keys on the operation panel, see the first few pages of Chapter 2, “Using the Operation Panel.”

A

A-2 Menu Help

A

A-3 Menu Help

A

A-4 Menu Help

A

A-5 | Menu Help

A

A-6 Menu Help

Index

Symbols

Set 2-8
Tray1 2-8
Tray2 2-9
Tray3 2-9

Numerics

10 Base-2 Ethernet cable 1-2
10 Base-5 Ethernet cable 1-2
10 Base-TX Ethernet cable 1-2

A

Add Port option 3-17
Administrator password, setting 2-7
Adobe Type Manager, *see* ATM xiii
amount of memory required xiv, xv
Another FS? option 2-25
AppleTalk 4-2
 enabling 2-17
 installed with Windows NT 4.0 xiv
 supported by color server xi
AppleTalk Setup menu 2-17
AppleTalk Zone option 2-17
ATM (Adobe Type Manager) xiii
ATM for Macintosh 4-7
Auto Frame Type option 2-18
Auto Gateway option 2-17
Auto Netbios option 2-25
Auto Paper Eject option 2-9
Available Servers option 2-24

B

Bindery emulation
 configuring Netware 3.x file
 servers 2-23
 configuring Netware 4.x file
 servers 2-23
Bindery Settings option 2-23

bindery settings, deleting 2-20
bindery setup, options 2-20
Bypass Tray Size option 2-8

C

cable, color server xii
cables, types supported
 See also parallel cable
Change Password option 2-7
Change Settings? option 2-20
Check and Print menu 2-4
CMYK Color Reference file 3-24, 4-8
Color Adjustment menu 2-4
color management files xii, xiii
color reference files xiii, 3-24, 4-8
color server specifications xi
ColorSync color management files xiii
ColorWise color management files xii
Configuration page 3-6, 3-19
Configuration page, printing 2-27
configuring NetWare network
 servers 1-10
configuring network clients
 NetWare 1-13
 Windows NT 1-13
Connected Servers option 2-23
connecting
 Windows 95/98 by IPX (Novell) 3-5
 Windows 95/98 by parallel port 3-4
 Windows NT 4.0 by IPX 3-12
 Windows NT 4.0 by parallel
 port 3-11
 Windows NT 4.0 by TCP/IP 3-16
connecting Macintosh using
 AppleTalk 4-2
connecting printer
 using parallel cable 1-4, 1-4
 using thicknet cable 1-2

- using thinnet cable 1-3
- using twisted pair cable 1-2
- connector 1-4
- conventions used xvi
- Cover Page option 2-10

D

- Def Orientation option 2-10
- Def. Paper Size option 2-8
- default page orientation, option 2-10
- Del Bind Setup? option 2-20
- deleting bindery settings 2-20
- designating an SMB server 2-26
- device name 3-18
- DNS (Domain Name Server)
 - name 3-17, 3-22
- DNS name xiv, xv
- Domain Name option 2-26

E

- EFIRGB ICC 4-4
- Enable AppleTalk option 2-17
- Enable Auto IP option 2-14, 2-16
- enable bindery emulaton mode,
 - option 2-23
- Enable Bindery option 2-23
- Enable BOOTP option 2-15, 2-16
- Enable DHCP option 2-14, 2-16
- Enable NDS option 2-20
- Enable Novell option 2-18
- Enable Pserver option 2-19
- Enable RARP option 2-15, 2-16
- Enable SMB option 2-25
- Enable TCP/IP option 3-16
- Enter Password option 2-21
- Enter Passwork option 2-22
- Eth. IP Address option 2-15
- Eth. Subnet Mask option 2-15
- Ethernet 100BaseTX cable xii
- Ethernet 10BaseT cable xii
- Ethernet 802.2 option 2-19

- Ethernet 802.3 option 2-18
- Ethernet cable, types supported 1-3
- Ethernet frame type
 - 802.2 2-19
 - 802.3 2-18
 - II 2-19
 - SNAP 2-19
- Ethernet II option 2-19
- Ethernet network 1-8
- Ethernet option 2-12
- Ethernet SNAP option 2-19
- Ethernet Speed option 2-12
- EtherTalk xv

F

- Fast Ethernet 100BaseTX cable xii
- Fiery Web Tools
 - Web Downloader 3-22
- Fiery WebTools
 - language 2-26
 - setting up 3-21, 4-5
 - system requirements xiv, xv
 - version of browser required xiv
- File Servr Login option 2-24
- Font Number option 2-11
- Font Size (PT) option 2-11
- fonts
 - Adobe Type 1 xiii
 - PostScript Type 1 3-23, 4-7
 - screen fonts xiii
 - True Type 3-23, 3-24, 4-7
 - TrueType xiii
- Form Length option 2-10
- Fserver Password option 2-24

G

- Gateway Address option 2-17

I

- I/O Port Setup menu 2-4, 2-11–2-14
- I/O Timeout (SEC) option 2-13
- ICC printer profile 4-4

- ICM color management files xiii
 - Ignore EOF option 2-14
 - installing
 - additional software, Macintosh 4-7
 - additional software, Windows 3-22
 - parallel port printing 3-4
 - internal name, printer 3-18
 - Internet browsers 3-22, 4-6
 - Internet Explorer xiv
 - IP
 - address xiv, xv, 3-6, 3-17, 3-19, 3-21, 3-22, 4-5, 4-6
 - IPX
 - system requirements xv
 - IPX (Novell)
 - NDS 1-12
 - NetWare client setup 1-13
 - NetWare server setup 1-10–1-13
 - network protocol 2-18
 - networks 2-18
 - overview of printing 1-9
 - setting bindery context 1-12
 - setting up printing 1-10–1-13
 - Windows NT 4.0 3-12–3-16
 - with Mac OS 1-14
 - IPX (Novell) networks 2-18
 - IPX/SPX 3-4, 3-5, 3-6, 3-12
- J**
- Job Log, printing 2-27
 - Jobs to Save option 2-7
- L**
- Language setup 2-26
 - language, used on operation panel 2-26
 - lights, on operation panel 2-2
 - Login Object option 2-21
 - Login to Browse? option 2-20
 - lpd (TCP/IP)
 - platforms supporting printer 1-4
 - setting up system 1-4–1-6
 - setup summary 1-5
 - LPR printing 3-16, 3-17
- M**
- Mac OS
 - ATM xiii
 - installing software 4-1
 - on IPX (Novell) network 1-14
 - on TCP/IP network 1-7
 - Mac OS
 - system requirements xv
 - main setup menus 2-5
 - Max. Frame Size option 2-12
 - media attachment unit (MAU) 1-2
 - memory, amount required xiv, xv
 - Microsoft Internet Explorer, *see* Internet Explorer
 - Microsoft TCP/IP Printing software 3-16
- N**
- Name Server IP option 2-26
 - NDS
 - setting up a connection 1-12
 - NDS (Novell) settings, changing 2-20
 - NDS (Novell) settings, option 2-20
 - NDS file sever login
 - administrator 2-24
 - login name 2-24
 - supervisor 2-24
 - NDS tree
 - browsing 2-21, 2-22
 - login to browse 2-20
 - option 2-20
 - NDS Tree option 2-20
 - Netscape Communicator xiv
 - NetWare
 - client setup, Windows 95/98 3-5, 3-6
 - NDS 1-12
 - NetWare 4.x bindery context 1-12
 - NetWare Print Console 1-13
 - NetWise networking features xii

Network Protocol Setup menu 2-4, 2-14
 Network Protocol setup options 2-14
 Network Services Setup menu 2-4, 2-19
 networks
 setting network-specific
 information 2-11–2-14
 using printer on xi
 New Password option 2-7
 New Tree Deletes Bindery Setup
 alert 2-20
 Ntprint.inf file 3-14

O

off line, printer status 2-2
 OHP Slip Sheet option 2-9
 on line, printer status 2-2
 operation panel
 activity lights 2-2
 I/O Port Setup menu 2-11
 Network Protocol Setup menu 2-14
 overview 2-1
 Panel Language option 2-26
 setup from 2-3
 System Setup menu 2-6

P

Page Desc Lang option 2-8
 Page description language 2-8
 page description language, option 2-8
 Panel Language option 2-4, 2-26
 PANTONE color reference files 3-24, 4-8
 paper size, option 2-8
 parallel cable, connecting to printer 1-4
 parallel port
 attaching cable 1-4
 setup printing 3-4
 system requirements xv
 Parallel Port option 2-13
 Parallel Port setup 2-13
 password set on operaton panel 2-3, 2-5
 PCL

font number, specifying 2-11
 font size, specifying 2-11
 form length, specifying 2-10
 page description language, setting 2-8
 setting font pitch 2-11
 symbol set, specifying 2-11
 PCL Font List, printing 2-27
 PCL Printer Driver
 Windows 95/98 3-2
 PCL Setup menu 2-4, 2-10
 ping 1-6
 Pitch (Char/In) option 2-11
 Poll Int. (Sec) option 2-25
 PostScript
 errors, printing up to 2-9
 page description language, setting 2-8
 screen fonts xiii
 setup menu 2-9
 PostScript Printer Description file, *see*
 PPD
 PostScript Printer Driver
 Mac OS 4-1
 Windows 95/98 3-2
 Windows NT 4.0 3-8
 PostScript printer driver
 version 4.2 for Windows 95 xiv
 version 8.5 for Mac OS xv
 PostScript printing
 Mac OS 4-1
 Windows 95/98 3-2
 Windows NT 4.0 3-8
 PostScript Setup menu 2-4
 PostScript setup options 2-9
 Power Saver mode 2-7
 Power Saver option 2-7
 PPD
 overview xiii
 print jobs
 PostScript errors and 2-9
 viewing information about 2-10
 Print Pages from List menu 2-4

- Print Q Root option 2-23
 - Print Q Search option 2-22
 - Print Server option 2-22, 2-24
 - Print Start Page option 2-6
 - Print To PS Err option 2-9
 - printer
 - enabling AppleTalk option 2-17
 - font list 3-23
 - home page 3-22, 4-6
 - internal name 3-18
 - setup using the operation panel 2-3
 - specifying
 - Novell option 2-18
 - specifying AppleTalk zone 2-17
 - specifying installed devices 3-3, 3-10
 - specifying name 2-6
 - specifying Novell option 2-18
 - Printer Name option 2-6
 - Printer Setup menu 2-4, 2-8
 - printing
 - from serial port 4-1
 - PostScript errors and 2-9
 - start page 2-6
 - see also* PCL printing, PostScript printing
 - protocols
 - lpd (TCP/IP) 1-4
 - PS Font List, printing 2-27
 - PS Setup menu 2-9
 - Pserver Password option 2-24
 - Pserver program 2-20
 - Publish Printd Q option 2-6
- R**
- Remove Fserver option 2-24
 - Req All Routes option 2-13
 - Resets menu 2-4
 - Resp All Route option 2-13
- S**
- screen fonts, Macintosh 3-23, 4-7
 - Select Novell Frame Types option 2-18
 - serial port printing 4-1
 - Server Comment option 2-26
 - Server Name 3-6, 3-19
 - Server Name option 2-26
 - setting 2-8
 - setting up SMB printing 1-14
 - Size option 2-8, 2-9
 - Source Routing option 2-13
 - specifications, color server xi
 - specifying
 - AppleTalk zone 2-17
 - Novell option 2-18
 - specifying installed devices
 - Windows 95/98 3-3
 - Windows NT 4.0 3-10
 - start page, printing 2-6
 - Symbol Set option 2-11
 - System 7 xv, 4-1
 - See also* Mac OS
 - system requirements
 - IPX xv
 - Mac OS xv
 - parallel port xv
 - Windows xiv
 - System Setup menu 2-4, 2-6
- T**
- TCP/IP
 - enabling 3-21, 4-5
 - platforms supporting printer 1-4
 - printing in 3-16
 - setting up printing in Windows NT 4.0 3-17
 - setting up system 1-4-1-6
 - setup summary 1-5
 - SMB printing with 2-25
 - supported by color server xi
 - TCP/IP-Ethernet option 2-14
 - TCP/IP-Ethernet, option 2-14
 - TCP/IP-Token Ring option 2-15

- 10 Base-2 Ethernet cable 1-2
- Test Page, printing 2-27
- thicknet cable xii, 1-2
- thinnet cable xii, 1-3
- Token Ring
 - card 3-21
 - enabling 3-21
 - setup 2-12
- Token Ring 802.2 option 2-19
- Token Ring frame type
 - 802.2 2-19
 - SNAP 2-19
- Token Ring option 2-12
- Token Ring SNAP option 2-19
- Token Ring Speed option 2-12
- Token Ring, optional kit xii
- TR IP Address option 2-16
- TR Subnet Mask option 2-16
- twisted pair cable 1-2

U

- UNIX systems
 - setting up 1-6
- unshielded twisted pair (UTP) cable xii
- URL (Uniform Resource Locator) 3-22
- Use Name Server option 2-26
- User Software CD 3-22
 - Adobe PS Printer Driver xii
 - overview xii

V

- Verify Password option 2-7
- VisualCal menu 2-4

W

- WebSpooler, setting the administrator
 - password for 2-7
- Windows
 - ATM xiii
 - system requirements xiv
- Windows (SMB) printing 2-26
- Windows 95

- system requirements xiv
- Windows 95/98
 - installing TrueType fonts 3-24
 - IPX/SPX 3-5, 3-6
 - PCL printer driver 3-2
 - PostScript printer driver 3-2
 - PostScript printing 3-2
- Windows NT 4.0
 - device name 3-18
 - installing TrueType fonts 3-24
 - IPX 3-12–3-16
 - PostScript printer driver 3-8
 - running Web Downloader with
 - Netscape Communicator 3-22
 - setting up TCP/IP printing 3-17
 - system requirements xiv
- Windows NT 4.0 Hot Fix 1-7, 3-22
- Windows or WINS printing, see SMB printing
- WINS Name Server 3-6, 3-19

Z

- zones, AppleTalk 2-17

